

Marketing Support & Resources for Bicycle Tourism



RideOregonRide.com Website

Travel Oregon Media Channels

PR + Media

Video Assets

Photo Assets

Bike Friendly Business Program





How did they learn about cycling in OR?

- Internet search – 83.5%
- From friend/relative who lives in Oregon – 40.9%
- Other cycling website – 33%
- Cycling magazine article – 23.1%
- TravelOregon.com – 21.2%
- RideOregonRide.com – 19.2%
- Social media website – 18%



RideOregonRide.com

Search everything...

SEARCH

FIND A RIDE

RIDE INSPIRATION

EVENTS

RESOURCES

Search by Ride Location

Ex: Portland or 555 State St. Salem 55025

Select a Ride Type

- ☐ Mountain Biking Trails
- ☐ Road Routes
- ☒ Oregon Scenic Bikeways

Select a Ride Length (in miles)



Search Rides



TransAmerica Bike Race: Oregon Is the Origin

June 7, 2014 05:00 Astoria, Oregon

TransAmBikeRace.com

LEARN MORE ABOUT
**OREGON'S TOP
MOUNTAIN BIKING**
DESTINATIONS

WHAT'S NEW

ON TWO WHEELS

**McKenzie Pass Scenic
Bikeway Now Open to
Cyclists**



**Blue Mountain
Century Scenic
Bikeway Supported
Ride**



LEARN MORE ABOUT
**OREGON'S TOP
MOUNTAIN BIKING**
DESTINATIONS

WHAT'S NEW
ON TWO WHEELS

**McKenzie Pass Scenic
Bikeway Now Open to
Cyclists**



**Blue Mountain
Century Scenic
Bikeway Supported
Ride**



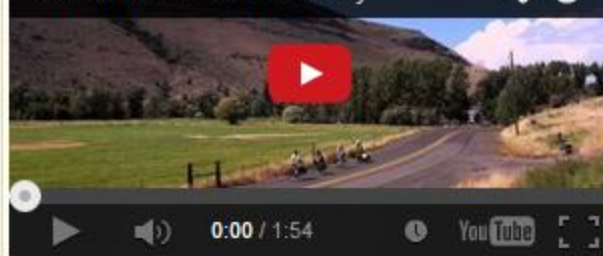
OREGON'S SCENIC BIKEWAYS

Oregon's innovative Scenic Bikeways program offers the very best of Oregon's scenic, historic, natural and cultural experiences — from the seat of a bike. [Learn more about the Oregon Scenic Bikeways program](#), [get your travel guide](#) and come ride Oregon!

Tualatin Valley Scenic Bikeway



Grande Tour Scenic Bikeway



McKenzie Pass Scenic Bikeway



Tualatin Valley Scenic Bikeway

Length: 50.4 miles

Origin: Hillsboro

Cities Near the Route: Forest Grove, Vernonia, Banks

This Bikeway captures the best of the northern Willamette Valley, from friendly downtowns to fertile farmlands and lush natural areas. It runs point-to-point over 50 miles and includes the Banks-Vernonia State Trail.

[Continue Reading](#)

Grande Tour Scenic Bikeway

Length: 134.5 miles

Origin: La Grande

Cities Near the Route: John Day, Prairie City, Bates

Discover the clear streams and serene farmlands, the scented canopy of Ponderosa pine forests, the towering windmills and the sweeping sagebrush rangelands of beautiful Eastern Oregon on this 134-mile figure-8 route.

[Continue Reading](#)

McKenzie Pass Scenic Bikeway

Length: 35 miles

Origin: Sisters

Cities Near the Route: Bend, Camp Sherman

McKenzie Pass showcases forests on both the east and west sides of the Cascades, as well as a lava-rock moonscape at the top that's unlike anything you'll probably ever see on a bike ride again.

[Continue Reading](#)

**SEARCH****FIND A RIDE****RIDE INSPIRATION****EVENTS****RESOURCES****MOUNTAIN BIKING ▾****SCENIC BIKEWAYS**

Oregon Scenic Bikeways

Oregon's innovative Scenic Bikeways program offers the very best of Oregon's scenic, historic, natural and cultural experiences – from the seat of a bike.



The Best of Oregon Riding



Did you know Oregon has the only Scenic Bikeways program in the nation? Our unique Scenic Bikeways program features routes suggested by locals so you know you're getting the best of the best when you ride an Oregon Scenic Bikeway. These routes have been officially reviewed, ridden and adopted, and each one provides inspiration for planning a two-wheeled vacation in Oregon for visitors and residents riding here for the first time or the fiftieth.

The routes are diverse, accommodating everyone from beginning to advanced riders, for day trips or extended, multi-day adventures. Some Bikeways are linear, some are loops, some are short and some are long. Explore the descriptions and detailed maps for the Scenic Bikeways below or pick up your free *Oregon Scenic Bikeways guide* and start planning your own scenic cycling adventure.

1

Metolius River Loops Scenic Bikeway

Length: 24.3 miles | Origin: Camp Sherman





The routes are diverse, accommodating everyone from beginning to advanced riders, for day trips or extended, multi-day adventures. Some Bikeways are linear, some are loops, some are short and some are long. Explore the descriptions and detailed maps for the Scenic Bikeways below or pick up your free [Oregon Scenic Bikeways guide](#) and start planning your own scenic cycling adventure.

- 2 **Madras Mountain Views Scenic Bikeway**
Length: 29.3 miles | Origin: Madras
- 3 **McKenzie Pass Scenic Bikeway**
Length: 35 miles | Origin: Sisters
- 4 **Twin Bridges Scenic Bikeway**
Length: 36.4 miles | Origin: Powell Butte
- 5 **Sisters to Smith Rock Scenic Bikeway**
Length: 37 miles | Origin: Sisters
- 6 **Covered Bridges Scenic Bikeway**
Length: 37.3 miles | Origin: Cottage Grove
- 7 **Tualatin Valley Scenic Bikeway**
Length: 50.4 miles | Origin: Hillsboro
- 8 **Blue Mountain Century Scenic Bikeway**
Length: 109.3 miles | Origin: Heppner



Share a Suggestion

MOUNTAIN ROAD CYCLING

We're always searching for new places to ride... on road and off road. And we're always looking for cycling-related events. So if you know of one that's not on the site, suggest it and we'll share it with your fellow cyclists.

Blue Mountain Century Scenic Bikeway

Scenic Bikeway

Length: 109.3 miles | Difficulty: Extreme | Origin: Heggner | Attributes: Extended Climbs, Forest, River Views, Wilderness, Wildlife Views



Bike Shops (1)	Attractions (43)	Emergency Services (1)	Food & Drink (40)	Places to Stay (46)
----------------	------------------	------------------------	-------------------	---------------------

Elevation Chart



Directions

Get directions to the start on Google Maps

These maps and directions are for planning purposes only. You may find that construction projects, traffic, or other events may cause road conditions to differ from the map results. For travel options, weather and road conditions, visit traffic.com, call 511 (in Oregon only), 800.677.6265 or 800.955.2241.



Official Maps and Cue Sheet from Oregon Parks and Recreation

Download a turn-by-turn cue sheet: [Blue Mountain Century Cue Sheet](#)

Download a detailed map of the entire route: [Blue Mountain Century Route Map](#)

Download an inset map of the start/finish in Heggner: [Blue Mountain Heggner Inset Map](#)

Route Description

Download an inset map of the start/finish in Heggner: [Blue Mountain Heggner Inset Map](#)

Route Description

In the middle of the 19th century, the Blue Mountains were a formidable obstacle on the Oregon Trail — often the last mountain range American pioneers had to cross before reaching southeast Washington or passing down the Columbia River Gorge to the end of the Oregon Trail in the Willamette Valley. The range is located in the high, dry and much less traveled country of northeast Oregon.

While pioneers traversed this challenge on horseback, cyclists today can take on the Oregon Trail on their metal and carbon-fiber steeds. Besides the breathtaking views of the Blue Mountains, the well-maintained roads with barely any vehicle traffic make this bikeway a cycling paradise.

The 105-mile Blue Mountain Century Scenic Bikeway is a breathtakingly beautiful loop that starts and ends in Heggner, a full-service community with secure places to leave your vehicle while you ride.

The route is rich in history — Heggner was founded by Irish immigrants in 1857 — and initially follows the Blue Mountain Scenic Bikeway, rolling through valleys before climbing east through the Umatilla National Forest and then offering a thrill-ride descent to Highway 325, near Ukiah. There the route turns north, transitioning from forest to rangeland before heading west along Highway 74 through more of Eastern Oregon's rolling hills and back to Heggner.

This route offers plenty of climbing — the top of the Umatilla Forest section is more than 3,000 feet above Heggner. But take your time and enjoy the ride, because you'll have plenty to look at.

This ride can be accomplished in one day by more advanced cyclists, or in two days for those who like to stop and smell the sagebrush, with nice camping options in or near Ukiah.

Motorized Vehicle Traffic: Low, except for Highway 325, which is busier with a minimal shoulder at best.

Seasons: Late spring to fall

More Resources

Order a free copy of the *Oregon Scenic Bikeways travel guide* and start exploring the best routes that Oregon has to offer — all from the seat of a bike.

Important Traffic Information: Scenic Bikeway routes often include roads with car and truck traffic. Although the Bikeways are routed on low-traffic and low-speed roads whenever possible, most are designated for cyclists that are comfortable riding in some amount of traffic. For traffic-free riding, please check out the Tualatin Valley Scenic Bikeway section north of Bend and the first half of the Covered Bridges Scenic Bikeway.

Photos of this Ride



UPCOMING EVENTS

Jun 4, 2014	<i>Bike Centered Yoga (Portland; every Wednesday)</i> Portland
Jun 4, 2014	<i>Central Oregon 500</i> Bend
Jun 4, 2014	<i>Siskiyou Velo Wednesday Coffee Ride (Ashland; every Wednesday)</i> Ashland

[View Event Calendar](#)

BIKE SERVICES

Attractions
Bike Friendly Businesses
Bike Shops
Emergency Services
Food/Drink
Frame Builders
Places to Stay
Tour Companies

TRAVELING WITH YOUR BIKE

Arriving by Plane
Arriving by Train
Bike Concierge Services
Oregon Public Transit Systems
Shipping your Bike
Shuttle Companies

Share a Suggestion

MOUNTAIN
BIKING TRAIL
CYCLING
EVENT

ROAD
ROUTE

We're always searching for new places to ride... on road and off road. And we're always looking for cycling-related events. So if you know of one that's not on the site, suggest it and we'll share it with your fellow cyclists. If you have something else to suggest, or just have questions, please email us at info@rideoregonride.com.

LOVE THE OREGON OUTDOORS? SIGN UP
FOR TRAVEL OREGON'S OUTDOORS UPDATE!

SUBSCRIBE

© 2009-2014 Travel Oregon and our [Partners](#). | [Contact](#) | [Learn More About this Site](#) | [Terms of Use](#)

THE
TRAVEL OREGON
NETWORK

CONNECT
TravelOregon.com
[Central Oregon](#)

TRAVEL OREGON
RESOURCES
[Visitor Centers](#)

- See & Do > Recreation -

CYCLING



Whether you're into road biking, mountain biking or in-town cruising, Oregon has the trails and bike paths to suit your cycling. We have the only Scenic Bikeways program in the nation (nine bikeways and growing!) as well as world class single-track mountain bike trails winding through deep forests and along wild rivers. Portland has the highest percentage of bike commuters in the nation (7%), and our Cycle Oregon and Mountain Bike Oregon events are beloved by two-wheelers everywhere.



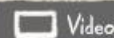
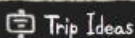
- find your perfect ride -

RIDE OREGON RIDE



Not only has Portland been rated the number-one biking city in the nation, according to Bicycling magazine, but Oregon's back roads, miles of trails, intimate inns and dining options make the state ideal for a road trip on two wheels. We've got everything from easy rides at sea level to exhausting assaults on 10,000-foot peaks.

Find the Perfect Ride



LET'S GET SOCIAL



STAY IN TOUCH-SUBSCRIBE



GET IN-CONTACT



FREE TRAVEL-GUIDES



TRAVEL OREGON-NETWORK

INTERNATIONAL-VISITORS



SEE
-AND-
DO

TRIP
IDEAS

CITIES
-AND-
REGIONS



Sign In / Create an Oregon Road Trip

Search Oregon...

search

ASK
OREGON

SEASONAL
FEATURES

PLACES TO
STAY

TRAVEL
DEALS

GETTING
-AROUND-
OREGON

Oregon Stories

Itineraries

Scenic Byways

Grant's Getaways

Travel Interests

- [Trip Ideas](#) > [Oregon Stories](#) -

McKenzie Pass Scenic Bikeway

by [Emily Forsha](#) - May 29th, 2013



If your idea of a weekend getaway is getting away with your bike, then the McKenzie Pass Scenic Bikeway is calling your name. Although the route is open all summer, for a few weeks each spring it's only open to cyclists – and enjoying the car-free climb is an Oregon cycling tradition. You'll pass through strikingly different forests on the east and west sides of the Cascades, hot springs, and a lava-rock moonscape at the top that's unlike anything you'll probably ever see on a bike ride again.

Flag as Incorrect

Is any of the information on this page incorrect?





OREGON'S
SEVEN
WONDERS

SEE
-AND-
DO

TRIP
IDEAS

CITIES
-AND-
REGIONS



[Sign In / Register](#)

old west scenic bikeway

ASK
OREGON

PLACES TO
STAY

TRAVEL
DEALS

All (12)

- CATEGORY -

Map (4)



Riding the Old West Scenic Bikeway

written by [Laura Crawford](#) on August 29th, 2012

There's a little-known secret about cycling in Oregon:
Some of the best riding in the state isn't in Portland or...

[Outdoors & Nature](#)
(within [Attractions](#))

[Sustainable Travel](#)
[Cycling](#)
(within [Recreation](#))

[Old West & Oregon Trail](#)
(within [Oregon Heritage](#))



Boat and Bike in Eastern Oregon

written by [Emily Forsha](#) on April 8th, 2013

We named it Hells Canyon to scare people but folks who
appreciate jaw-dropping scenery and rugged rivers will
want...

[Outdoors & Nature](#)
(within [Attractions](#))

[Oregon](#)
[Adventure/Recreation](#)
[Jet Boating](#)
[Guides & Charters](#)
[Cycling](#)
(within [Recreation](#))

[Bodies of Water](#)
(within [Natural Wonders](#))



Oregon Rolls Out Five New Scenic Bikeways

written by [Eileen Garvin](#) on September 30th, 2011

Roadies rejoice! In September, the Oregon Parks and
Recreation Department announced five new scenic
bikeways. The 132...

[Cycling](#)
(within [Recreation](#))

Oregon Rolls Out Five New Scenic Bikeways

written by [Eileen Garvin](#) on September 30th, 2011

Roadies rejoice! In September, the Oregon Parks and Recreation Department
announced five new scenic bikeways. The 132...

[Oregon Story](#)



Sunny Spring Road Bike Rides

written by [Eileen Garvin](#) on March 13th, 2014

Spring sunshine always gets our wheels turning: the ones
in our heads that start planning the ultimate spring road

[Cycling](#)
(within [Recreation](#))



-LET'S GET-
SOCIAL

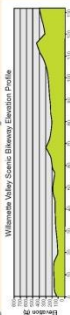


-STAY IN TOUCH-
SUBSCRIBE

-GET IN-
CONTACT

-FREE TRAVEL-
GUIDES

-TRAVEL OREGON
NETWORK

[illegible][illegible]

LEGEND

-  Bikeway
-  Paved Bikeway on Old Railroad
-  Mile Marker
-  Restroom
-  Drinking Water
-  Lodging
-  Food
-  Camping

McKenzie Ridge is simply one of the most spectacular rides in the country, an over-the-top roller coaster that literally and figuratively takes you on a wild ride. This route is best started in the Old West town of Sisters. Ride out of town through the Popovian pines of the old alpine climate, and you'll be in the heart of the McKenzie Ridge. The ride is a roller coaster that emerges into a low rock meadow at the top—the result of multiple ancient volcanic eruptions. It's unlike anything you'll probably ever see on a bike ride again. Don't miss the top of the ride. Spin down the soothing waters of the Douglas fir forest to the soothing waters of the McKenzie River. The ride is a roller coaster that emerges into a low rock meadow at the top—the result of multiple ancient volcanic eruptions. It's unlike anything you'll probably ever see on a bike ride again. Don't miss the top of the ride. Spin down the soothing waters of the Douglas fir forest to the soothing waters of the McKenzie River, or turn around back toward Sisters. This ride is a roller coaster and only one of the many rides that make up the current conditions in Sisters before heading out.

3 McKenzie Pass
Scenic Bikeway

Lake County has more authentic, covered bridges than any county west of the Mississippi River, and this *Riverview* shows off several of them—not to mention a lovely rail-to-trails conversion along a scenic shoreline.

Start in Cottage Grove, an historic city right in the center of the state. From there, follow a multitude of activities and attractions. Pedal your way down and into the flat countryside past two covered bridges, all on the Row River Trail. Then, protect little path that was once a thriving railroad. Then, skirt the shores of Donora Lake (named for a sailing ship at the foot of the Cascades) and enjoy the view of the lake and the surrounding mountains. For almost any rider, you can do an out-and-back on the path and be traffic-free, or for variety, you can go out on the path and back via a different route. The trail is a beautiful, scenic ride, including one healthy (optional) climb.

2
Covered Bridges
Scenic Bikeway

The original Oregon State Bikeway, this scenic showcase area, is the most productive lowland—agricultural valleys in the world (even for world class Pinot Noir from many of its 200 wineries. Between the winery views, you'll also see a series of enchanting small towns and villages along the way. The Willamette Valley State Bikeway follows the Willamette River through the wine country. The Bikeway follows its namesake river as it winds through the Willamette Valley, shaped by the Coast Range to the west and the sweeping Coast Range Mountains to the east. You'll see an amazing bounty of crops from flowers and herbs and nut trees to berries. There are also farms and ranches, and you'll get a glimpse into river segments, and it has very little climbing. Distance: 122 miles

**Willamette Valley
Scenic Bikeway**

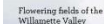
A map of the Pacific Northwest region, showing parts of Oregon, Washington, and California. The map is oriented with North at the top. The Pacific Ocean is to the west. The map shows the following cities and their corresponding rankings for 2012:

- Portland: 1
- Salem: 2
- Eugene: 3
- Medford: 4
- Bend: 5
- Redmond: 6
- Grants: 7
- Marion: 8
- Corvallis: 9
- Keizer: 10

The map also shows the borders of Oregon, Washington, and California, and the Pacific Ocean to the west.

Designated Scenic Bikeways

1. Willamette Valley
2. Covered Bridges
3. McKenzie Pass
4. Metolius Loops
5. Twin Bridges
6. Sisters to Smith Rock
7. Old West
8. Blue Mountain Century
9. Grande Tour



Download detailed maps, plus find great places to stay, where to eat, and what to see and do while on your Oregon bike trip at RideOregonRide.com



OREGON
SCENIC BIKEWAYS



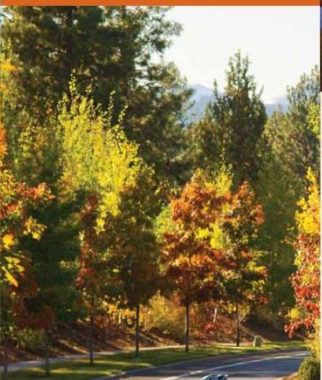
Ever head out on a bike ride that feels more like a parade? We don't. Here in Oregon we have some of the most breathtakingly beautiful places in the nation for biking—we're also one of the most bike-friendly places on earth.

Oregon is home to an endless network of highways and back roads, from rugged coastal headlands to deep old-growth forests, lush vineyard-lined valleys to lofty alpine passes, high-desert vistas to deep river canyons. Our epic landscapes offer expert and beginner cyclists unimaginable diversity. Beyond the spectacular settings, our roads give you the chance to meet locals across diverse cultures. Our routes are amazing, but our people may be our best asset of all.

We want bikes on our roads, and that's why we're the only state in the country with official Scenic Bikeways. These routes are the very best of Oregon riding, nominated by locals and then tested, signed and mapped. Riding a Scenic Bikeway is like having a tour guide set up a perfect route for you—then you just go out and enjoy it on your own.

So choose one—or several—of these Scenic Bikeways to explore. And while we know you'll love the riding don't forget some of Oregon's other charms: enjoy an Oregon beer brewed from local hops, some sustainably raised beef, and some of the finest organic produce on the planet—the perfect end to a spectacular day of cycling!

For detailed maps, cycling events, and bike-friendly lodging and dining, visit:



Cycling's New Northwest Passage

With newly designated scenic bikeways, central Oregon just became one of the world's top destinations for breathtaking open-road tours.

by DANIEL DUANE

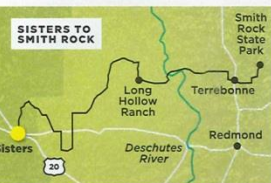
TRAVEL

FOR SERIOUS cyclists in the know, Oregon has always had Tour de France-level rides — sleepy wine-country lanes, Cascade Mountain passes, remote ranching roads. But a recent partnership between the state's park and tourism agencies has created a game-changing system of specially designated routes well worth the plane ticket. State employees canvassed local cyclists for a master list of rides linked to picturesque small towns. Then cycling teams rode and ranked each one by criteria including difficulty, road quality, and pure beauty. The nine routes that made the resulting short list — from afternoon thigh-burners to long-haul camping tours — were upgraded with bike lanes and "Scenic Bikeway" signage. (Several more routes are slated for approval by summer's end.) While the concept is simple, the net effect is a kind of turnkey bike tourism that allows out-of-staters to drop easily into epic, open-road journeys through jaw-dropping landscapes. As for where to begin: Fly into Bend, which offers world-class whitewater and rock climbing, excellent shops where you can rent a set of wheels, the highest per capita concentration of breweries in Oregon, and easy access to our three favorite rides from the new list.



THE SPEED RUN Sisters, Oregon to Smith Rock State Park

DISTANCE: 37.1 miles
DIFFICULTY: Moderate



Just 30 minutes from Bend, Sisters is a quaint Western town where the social calendar revolves around the annual rodeo and the country's largest quilting show. Settle into the haute-rustic FivePine Lodge, then get ready for big views. "Leaving the mountainous country around Sisters and riding into the high desert of central Oregon along the Deschutes River, it's just beautiful," says ultra-endurance cyclist Gregg Geser, a local who does laps on this rural run to train. Smooth pavement,

minimal traffic, and a steady loss in elevation (300 feet) can have you blazing along at 25 mph. On the day Geser let me tag along, a 45-mph tailwind let us easily hit 35 without pedaling for miles at a time. The ride turns perpendicular to the wind here and there — we had our bikes leaning 45 degrees at one point to fight it. But the only real obstacle lies in the distraction of river pools begging for hand-tied flies and wildlife preserves full of beaver, otter, and eagles. Don't forget to pack your

rock-climbing shoes: The ride ends among the sport-climbing crags of Smith Rock State Park.

TIP: To start from the airport, have guide Whit Bazemore of Ride Cycling Tours pick you up, drive you 25 miles to Smith Rock, and shuttle your luggage while you rip it east to west. You'll look nonstop at the Three Sisters, a trio of 10,000-foot, snow-capped volcanoes, and finish in downtown Sisters, where you can hit the Open Door wine bar for dinner.

NOTEBOOK



THE COFFEE TO BEER ROUTE

**Twin Bridges Scenic Bikeway
Bend, Oregon**
DISTANCE: 36.2 miles
DIFFICULTY: Moderate

Set up shop at the swanky Oxford Hotel in downtown Bend. Across the street, Thump Coffee offers the most cycling-friendly breakfast in Oregon: munitions-grade, house-roasted espresso and Picky Bars — small-batch energy bars created by pro triathlete and Bend local Jesse

Thomas. Thump also provides a perfect starting point for a loop beloved by Thomas and the dozens of pro, ex-pro, and wannabe-pro cyclists who call Bend home. Less than a mile beyond the city's 19th-century business district, you'll zip past kayaking runs on the Deschutes, hobby ranches tucked into the ponderosa forest, and breathtaking views on the climb to Mount Bachelor. "It's a great mixed-terrain ride," Thomas says. "Climbs, flat sections, technical corners, and not too many stop

signs, so you can really get after it." A word of caution: Every Tuesday, a group of locals screams around the loop like a pro peloton. Resist the urge to join, says Thomas. "I consider myself a strong cyclist, and even I've been left behind by that crew. The Belgians are legit."

TIP: At the ride's end, choose one of Bend's 10 brew pubs to kick back — Thomas' favorite is 10 Barrel. Not winded? Climb aboard the Bend Cycle Pub, a multiseat bar on wheels.

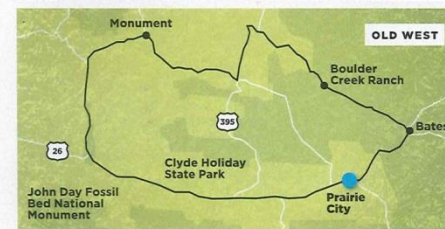
THE BIG TOUR Old West Scenic Bikeway

DISTANCE: 174.5 miles
DIFFICULTY: Challenging

Pioneer homesteads, winding rivers, tiny Western towns under red-rock buttes in the high desert — few American landscapes evoke the 19th-century frontier more than remote, central Oregon. The classic Prairie City in the tiny village of Prairie City marks the beginning of this two-to-three-day counterclockwise loop through the entire Old West Scenic Bikeway. From there, inn-to-inn cycling takes you through rural ranchland so remote and lacking in amenities that prudence calls for booking a food-stocked cabin in advance at the Boulder Creek Ranch in Bates. Roll in late on that first night, cook dinner with the provisions that are already waiting for you, and then wake early to enjoy fresh eggs from the coop. Cruise all morning along the quiet

curves of the John Day River, where chinook salmon spawn after swimming 480 miles upstream from the Pacific. A stunning, nine-mile descent — ideally, free of the meandering wild turkeys I encountered — sweeps you into Monument, an isolated town situated beneath stately mountains, where the Monument Motel & RV Park offers midridge lodging. Then it's a big, 61-mile day past the John Day Fossil Beds (Day was a fur trapper who joined the Lewis and Clark expedition from St. Louis to Oregon in 1810, then stuck around) to Mount Vernon, where you can rest your head at the Bike Inn. An easy, 21-mile spin the next day gets you back to Prairie City in time for steaks at the Oxbow Restaurant & Saloon.

TIP: Call Mike Cosgrove, the local proponent of this route (he put up all of its "Scenic Bikeway" signs) for goings-on in the area on the days you'll be there: 541-620-2250.



Get Outdoors

Events, notes and tidbits about Oregon's great outdoors

« Conservation groups call for increased protections Waldo Lake s for Marbled Murrelet

Two new Oregon routes designated scenic bik

Two more bicycle routes have been given state scenic bikeway designations.

The designations were made official recently by the Oregon State Parks ;

It's a diverse pair of bike rides.

The Tualatin Valley Scenic Bikeway features the best of the northern Willamette farmlands and natural areas in the heart of Washington County.

It covers more than 50 miles one-way, and includes the Banks-Vernonia ;

The Madras Mountain Views Scenic Bikeway is a 30-mile loop on rural roads showcasing basalt pallsades above the Deschutes and Crooked ; Cascade peaks of Three Sisters, Mt. Jefferson, Mt. Hood and Three Fingered

With the addition of the newest two, there are 11 officially designated scenic

The bikeways program is the only one of its kind in the country.

Launched in 2005, there now are more than 790 miles of designated scenic

The Scenic Bikeways Program is a partnership between Cycle Oregon, Oregon Department of Transportation and Parks and Recreation.

According to a recent independent report from Dean Runyan Associates, the program has become an important part of Oregon's economy.

Riders generated nearly \$400 million during 2012 – supporting 4,630 jobs and the direct travel spending in the state.

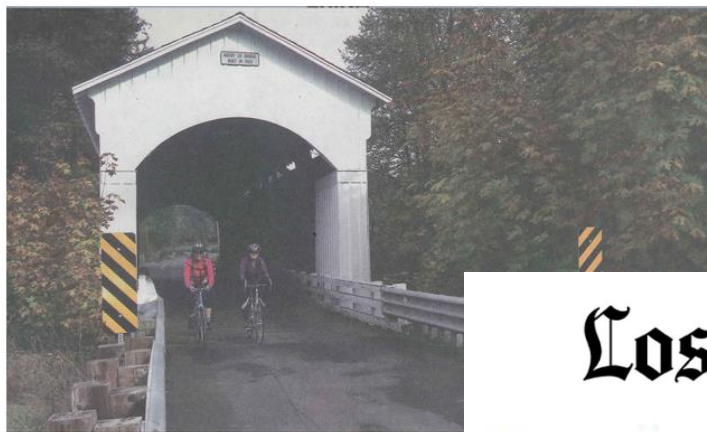
Check out all of Oregon's designated scenic bikeways online on the [Parks](#)

[Tweet](#) 2

This entry was written by Henry Miller, posted on May 13, 2013 at 11:10 am, filed under

« Conservation groups call for increased protections Waldo Lake s

The Dallas Morning News



Mossy Creek Bridge was built in 1920 and restored in 1990. It's one of the few bridges still open to vehicular traffic.

Many bridges

Lane County's scenic bikeway connects historic

By JAY JONES

Special Contributor

COTTAGE GROVE, Ore. — Move aside, Merriam Webster, Clint Eastwood and The Bridges of Madison County. It's Lane County's turn to shine.

With just six covered bridges, Madison County, Iowa, is merely a bit player. The superstar is Oregon's Lane County, which stretches from the Pacific coast to the Cascade Mountains. It boasts an amazing 20 covered bridges, the largest concentration of such spans west of the Mississippi.

Given the region's prolific trees, it made sense to use local timber to bridge streams and rivers. The shake or tin roofs kept the steady rains for which Oregon is famous from quickly rotting the planks.

As the old, often-narrow wooden structures were replaced with modern (but ugly) concrete crossings, Lane County's covered bridges began to disintegrate. Some were lost. By the early 1980s, local preservationists were rallying to rescue the remaining score.

"We were determined to save our bridges," said Marcia Allen, a past president of the local historical society. "We practically got down on our knees and begged the county commissioners to save Cottage Grove's bridges."

Those pleas led to funding to restore the landmarks and turn them into tourist attractions.

called the Covered Bridge Capital of Oregon — is the ideal base for exploring the half-dozen wooden spans within easy reach. They're accessible by car or bicycle. For folks in reasonably good shape — the ride is of moderate difficulty — the Covered Bridges Scenic Bikeway provides the perfect way to visit several bridges along a 38-mile loop around tranquil Dorena Lake.

Starting out from downtown Cottage Grove, the first 17 miles of the route are along the River Road Trail, a former rail line that's been paved. Shortly after leaving town, the trail reaches Mossy Creek Bridge, which Allen describes as one of the prettiest and one of the most historic crossings.

Built in 1920 in an idyllic setting, the covered bridge is

traffic. It was restored in 1990.

A bit further along, cyclists reach Currin Bridge, Oregon's only covered span that is painted two colors (red and white). Erected in 1925, it replaced an earlier covered bridge built in 1865.

Soon, the trail reaches the lakeshore on its way to Dorena Bridge. A picturesque spot that's popular for weddings, the stop includes one of the Bikeway's four rest areas. Along with Mossy Creek and Currin, Dorena is on the National Register of Historic Places. Nearby, water, sodas and snacks can be purchased in the hamlet of Dorena. Much of the route back to Cottage Grove is along Shoreview Drive. While bicyclists share the road with motor vehicles, there is a paved shoulder.

Just a couple of miles outside town, travelers arrive at Stewart Bridge, the last covered bridge along the Bikeway. At just 60 feet in length, the narrow, whitewashed crossing is one of the shortest.

Downtown Cottage Grove — with five blocks of lovingly restored historic buildings — provides a variety of cafes at which to refuel with a fresh pastry or sandwich. Then, it's time to make the short trip to the western edge of town to visit what's probably the area's most unique attraction: the Chambers Bridge. It's also the

most historic crossing.



One of only eight remaining covered railroads in the United States, the Coast Fork Willamette River grade was closed in 1951, the spanning the Coast Fork Willamette River grade but steadily began to fall into the river," said Guzman, a lifelong Cottage Grove resident and history buff.

As the bridge reopened in December 2011 and so served pedestrians and cyclists, "Cottage Grove" becoming a mecca for cycling enthusiasts," WJ said.

The bridge reopened

Los Angeles Times

Oregon: Free map of nine bike-worthy routes in the Beaver State

August 22, 2012 | By Mary Forgione | Los Angeles Times Daily Travel & Deal blogger

Covered bridges in Oregon? Lane County in the Willamette Valley claims to have more intact bridges than anywhere else west of the Mississippi River. Cyclists who follow an easy 38-mile loop will see the bridges as well as small towns and Dorena Lake at the foot of the Cascade Mountains.

The deal: The route is one of nine Scenic Bikeway Itineraries featured on a free map for travelers seeing the state from the seat of a bicycle. Longer routes in the eastern part of the state include the [Tour Scenic Bikeway](#), a 134-mile route along some sections of the original Oregon Trail, and the [Scenic Bikeway](#), which covers 175 miles through ponderosa pine forests and along rivers. But there's plenty of one- and two-day trips too.

When: The free map is available indefinitely.

Details: There are two ways to access the scenic bike-way routes, and I recommend both. Go to the [bikeways website](#) where each route is detailed with interactive maps that provide information on markers, lodgings, food stops, etc. It's a good way to plan your trip in advance.

Then go to the Travel Oregon website, which features [Travel Guides](#), and order a print version.

PortlandTribune

FEATURES SPORTS SUSTAINABLE LIFE OBITUARY

1 - Sunday, 27 October 2013 09:37

SHOP & DINE
IN PORTLAND'S
SECRET SUBURB



Scenic bikeway gets commission's OK

Created on Friday, 31 May 2013 11:00 | Written by [Jill Rehkopf](#) St

The Oregon State Parks & Recreation Commission the Tualatin Valley Scenic Bikeway at its May 8 mee begins in Rood Bridge Park in Hillsboro and winds v Forest Grove, up to the 20-mile Banks-Vernonia Tra



by: COURTESY PHOTO: WASHINGTON COUNTY VISITORS ASSOCIATION - Rolling hills line a section of the 50-mile Tualatin Valley Scenic Bikeway, which won state approval May 8.

There won't be a big event, but the Visitors Association total of 75 sign including 14 alone. The W within the st the signs, sai Carolyn McC to be ready b

Meanwhile the Oregon T

semi-independent agency created by the Legislature business as "Travel Oregon" — is already promoting internationally. Travel Oregon has a detailed, turn-b rideoregonride.com website, along with another ma attractions, restaurants, lodging and more.

Business owners who would like their establishment to show up on that map can contact Bryant Marban at 971-717-6188 or at



sustainable
business
oregon



powered by **BUSINESS JOURNAL**

Presenting sponsor:

SKANS

Home

News

Calendar

Green Jobs

Video

Resources

Local news

National

Date: Wednesday, February 1, 2012, 1:53

Oregon beefin

By Christina Williams
Sustainable Business Oregon

[Tweet](#)

[Recommend](#)

393C23TWU6HX

The Oregon Parks and Recreation I Oregon Tourism Commission's Trav announced last week two new desi bikeways, part of a push to fuse Or with a green approach to tourism.

The two new trails bring Oregon's t bikeways to eight. They are:

- The Covered Bridges Scenic Bi Grove, a 36-mile route taking in bridges.
- The Twin Bridges Loop Scenic I Drake Park, 36 miles of high-de

"We have really started to push bic though it's always been possible," : spokeswoman for Travel Oregon. "F pillars."



BikePortland
To inform a

Come Along for the Ride
Subscribe to our e-news

NEW SEASONS
MARKET

« The Monday Roundup

Portlanders make the most of a sunny cycling weekend »

Take a ride on the 'Grande Tour', Oregon's newest Scenic Bikeway

Posted by [Jonathan Maus \(Publisher/Editor\)](#) on April 9th, 2012 at 10:34 am

In case you missed it, the Oregon State Parks and Recreation Department released their ninth Scenic Bikeway last week. The *Grande Tour Scenic Bikeway* is a 134 mile, figure-eight loop between Baker City and La Grande that winds between the Wallowa and Whitman National Forests in eastern Oregon.



Riding the new Grande Tour Scenic Bikeway.
(Photos by Kristin Dahl/Travel Oregon)

The Scenic Bikeway program was made into law back in 2008 and the first route, the Willamette Valley Scenic Bikeway, was designated a year later. These routes, while they don't come with physical infrastructure changes, are the backbone of Oregon's larger effort to become the premier bicycle touring



STCN'S QUESTION OF THE WEEK
Is it legal to use a gas power on a multi-use path?

The Latest

- Rumble strips on Marine Drive?
 - Final days in business for The Missing Link bike shop
 - Thoughts and photos from North Portland Sunday Parkways
 - Skateboarding ban ordinance now excludes bicycles; but concerns remain
 - The Monday Roundup
- More headlines...

BikePortland on Twitter

I'd love to do this in Portland.. Great photo series shows people on bikes, but w/o their bikes <http://t.co/5V0xvKXY>

Look for a big fun feature on Portland bike moves in current issue of



From: Allison George <Allison@wcva.org>
To:
Cc: Amber Mitchell; Birgitte Simmons; Carolyn McCormick; Christopher Glawe; Corey Kearsley; Jackie Luskey; Jason McGill; Marie Prins; Melissa Hay; Sylke Neal-Finnegan
Subject: Tualatin Valley Scenic Bikeway UPDATE

Dear Tualatin Valley Scenic Bikeway Friends,

THANK YOU, again, for all that you've done in contributing to the establishment of the Tualatin Valley Scenic Bikeway! The OPRD installed by the end of August, the inaugural ride event in September was a big success, and, most importantly, ***none of this would*** have been possible without the collaborative nature of our communities and the pervasive "Oregon spirit" of which we can all be proud!

We'll be keeping in touch periodically to provide the latest news and updates about the TVSB. If you have any questions or comments, please contact the Washington County Visitors Association.

Latest Media Coverage

- **Meetings Focus West** (publication, circulation 35k) 10/13: "[From zip line tours to jet boat excursions, Oregon offers a wealth of outdoor recreation](#)"
- **Hillsboro Tribune** 9/24/13: "[New scenic bikeway rolls out in style](#)"
- **Vernonia Voice** 9/20/13: "[Tualatin Valley Scenic Bikeway](#)"
- **Grant's Getaways** (Broadcast) 9/19/13: "[Grant's Getaways-Tualatin Valley Scenic Bikeway](#)"
- **KPTV (FOX12)** 9/17/13: "[Bike riders gather for first ride on Tualatin Valley Scenic Bikeway](#)"
- **OregonLive** 9/16/13: "[Cyclists kick off Tualatin Valley Scenic Bikeway with inaugural ride](#)"
- **OregonLive** 9/16/13: "[Tualatin Valley Scenic Bikeway extends to Hillsboro](#)"
- **OregonLive** 9/13/13: "[Tualatin Valley Scenic Bikeway Trail could boost Washington County tourism](#)"
- **Vernonia Voice** 9/6/13: "[Be the First to Ride the Tualatin Valley Scenic Bikeway; Date of Official Launch and Inaugural Ride](#)"
- **Car Free Rambles** Blog 9/2/13: "[Tualatin Valley Scenic Bikeway](#)" (See also: [Accompanying photos by Stasia Honnold](#))

Photos

- [TVSB Facebook page: Inaugural Ride album](#)
- [Visit Oregon's Washington County Facebook page](#)
- [Inaugural Ride Flickr Set](#)
- [TVSB Flickr Set](#)
- [#TVSB hashtag via Instagram](#)

Finally, I'd like to share a nice quote from a Salem Bicycle Club Member who rode the route in August: "The Tualatin Bikeway route

Thanks again,

Scenic Bikeway Photography

Photos by Path Less Pedaled
Commissioned by Travel Oregon









Scenic Bikeway Videos

Old West

McKenzie Pass

Blue Mountain Century

Willamette Valley

Tualatin Valley

Sisters to Smith Rock

Covered Bridges

Filmed by Path Less Pedaled
Commissioned by Travel Oregon



Travel Oregon's Bike Friendly Business Program

Become a Bike Friendly Business and Enhance your Marketing Exposure to Bicyclists





Recognition & Training Program Aimed to:



- Help businesses understand the importance of Oregon's growing bike tourism industry
- Provide tips and tools for how businesses can be Bike Friendly
- Highlight businesses who commit to enhancing the Oregon biking experience for visitors and Oregonians
- Advance Oregon as a premier cycling destination

– [Places to Stay](#) > [Lodging](#) > [Hotel / Motel](#) –

Jupiter Hotel





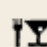

(a Hotel / Motel)

800 E. Burnside St. / Portland, OR 97214 – [View on Map](#)
phone: (503) 230-9200 / 877-800-0004 – email: info@jupiterhotel.com – [Visit Website](#)

Rates: Call for Rates

Total Units: 81

– amenities –

-  Air Conditioning
-  High Speed Internet Access
-  Kitchenette Or Full Kitchen
-  Pet Friendly
-  Restaurant / Lounge
-  Smoke Free

– travel oregon forever philanthropy partner –



The Oregon Travel Philanthropy Fund helps pay for projects around the state that improves the visitor experience. As a visitor, you can support these efforts by making a donation at this participating business, or [contributing directly](#).

– oregon bike friendly business participant –



This business has been officially recognized by Travel Oregon as Bike Friendly. Bike Friendly Businesses demonstrate a commitment to serving visitors who ride bikes and the specific amenities they may need. These businesses are making the Oregon bike experience better for our visitors and the people who live here. Find out more at RideOregonRide.com/BikeFriendly



Add to My Oregon Road Trip

Just about any place you find on TravelOregon.com can be added to your own Oregon Roadtrippers Account. [Find out how](#).



TripAdvisor Traveler
Rating based on
295 reviews

Get on the road with Roadtrippers

Roadtrippers

We've partnered with Roadtrippers to provide a great way to plan a trip around Oregon. So start planning your next road trip to here, there or pretty much anywhere in Oregon.

Check out Oregon.Roadtrippers.com

[Log In](#) or [Register](#)

Search everything...

SEARCH

FIND A RIDE

RIDE INSPIRATION

EVENTS

RESOURCES

FIND A BIKE SERVICE

TRAVELING WITH YOUR BIKE

BIKE CLUBS

MAPS & GUIDEBOOKS

BIKE FRIENDLY BUSINESSES

Oregon Bike Friendly Businesses



Oregon loves bicyclists. That's why we're the first state in the nation to create a Bike Friendly Business program geared toward travelers. Bike Friendly Businesses are committed to welcoming cyclists, offer amenities riders may need and have officially been recognized by the state. Find a list of participating businesses below, and don't forget to keep your eye out for the Bike Friendly sign – recognized businesses will showcase them prominently allowing you to easily locate them.

Businesses looking to be recognized Bike Friendly, learn more at Industry.TravelOregon.com/BFB

Showing 24 Bike Friendly Businesses

Filter by Business Type

All Types

UPDATE

BUSINESS NAME ▼

TYPE

CITY

REGION

Arriving By Bike

Bike Shops

Eugene

Willamette Valley

Ashland Cycle Sport

Bike Shops

Ashland

Southern Oregon

Blaq Paks

Bike Shops

Portland

Greater Portland

[Log In](#)

Search everything...

SEARCH

FIND A RIDE

RIDE INSPIRATION

EVENTS

RESOURCES

[FIND A BIKE SERVICE](#)[TRAVELING WITH YOUR BIKE](#)[BIKE CLUBS](#)[MAPS & GUIDEBOOKS](#)[BIKE FRIENDLY BUSINESSES](#)*Enter a Location*

Examples: Portland or 555 State St. Salem 55025

or

Select a Region ?

Eastern Oregon ▼

Select a Service Type☐ Bike Shops☐ Tour Companies☐ Shuttle Companies*More services you might find helpful on your ride*☐ Attractions☐ Emergency Services☐ Food/Drink☒ Places to Stay**Search Bike Services**

Showing 1 - 10 of 172 Places to Stay



Indicates a Bike Friendly Business

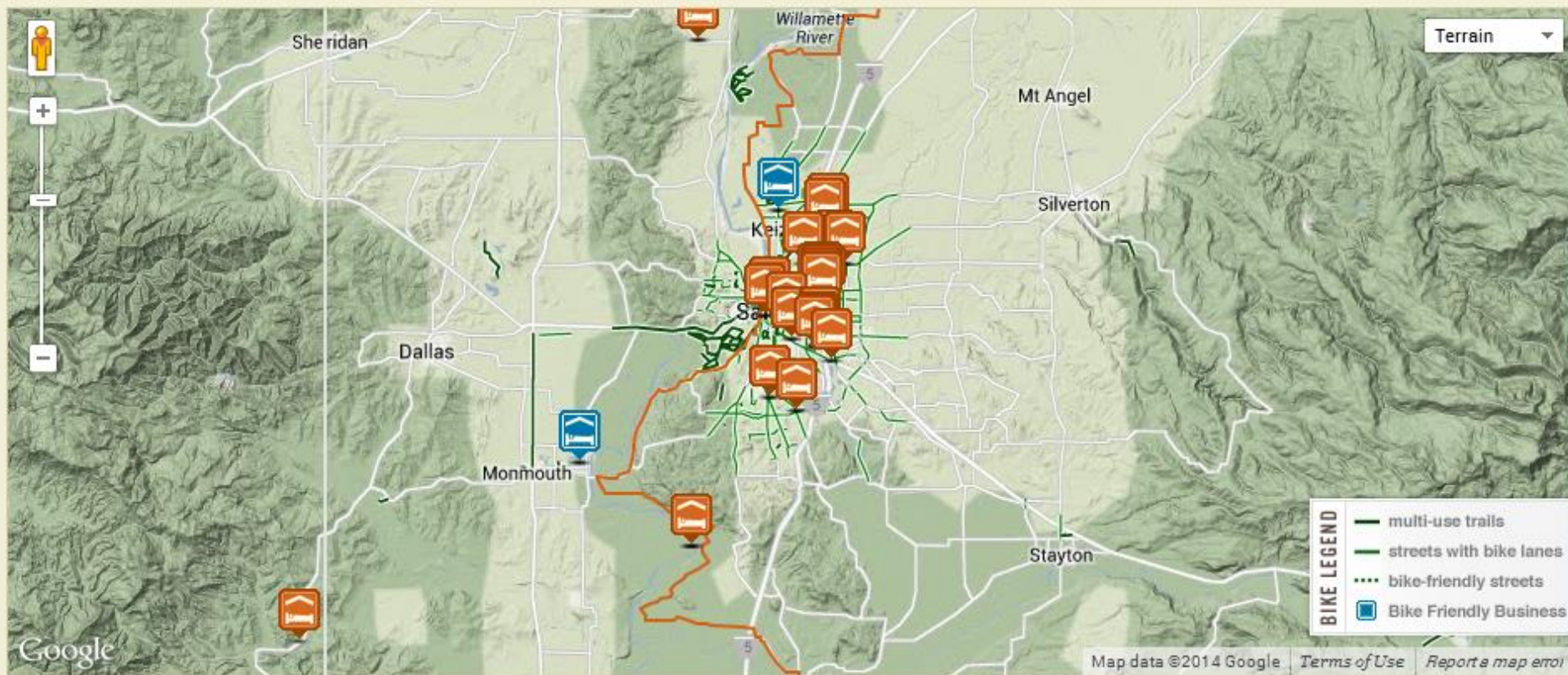
- 1** *Eagle's Hot Lake RV Resort*
Address: 65182 Hot Lake Lane, La Grande
- 2** *Geiser Grand Hotel*
Address: 1996 Main St., Baker City
- 3** *Stampede Inn*
Address: 51 S. 7th Ave., Elgin
- 4** *1910 Historic Enterprise House Bed & Breakfast*



Willamette Valley Scenic Bikeway

 Scenic Bikeway

Length: 133 miles | Difficulty: Moderate | Origin: Jefferson



Bike Shops (45)

Attractions (572)

Emergency Services (6)

Food & Drink (376)

Places to Stay (201)

Elevation Chart



Once Officially Recognized, Get Your Sign!



12" x 18"



12" x 14.5"

Non-Reflective One-Sided \$26.00

Non-Reflective Two-Sided \$45.00

Reflective One-Sided \$31.25

Reflective Two-Sided \$55.50

Customize it with the Amenities You Provide



Visitor Info



Brewery



Winery



Coffee



Restroom



Camping



Groceries



Shower



Dining



Wi-Fi



Bike Repair



Shipping



Charging



Parking



Laundry



Bike Parking



Lodging



Water

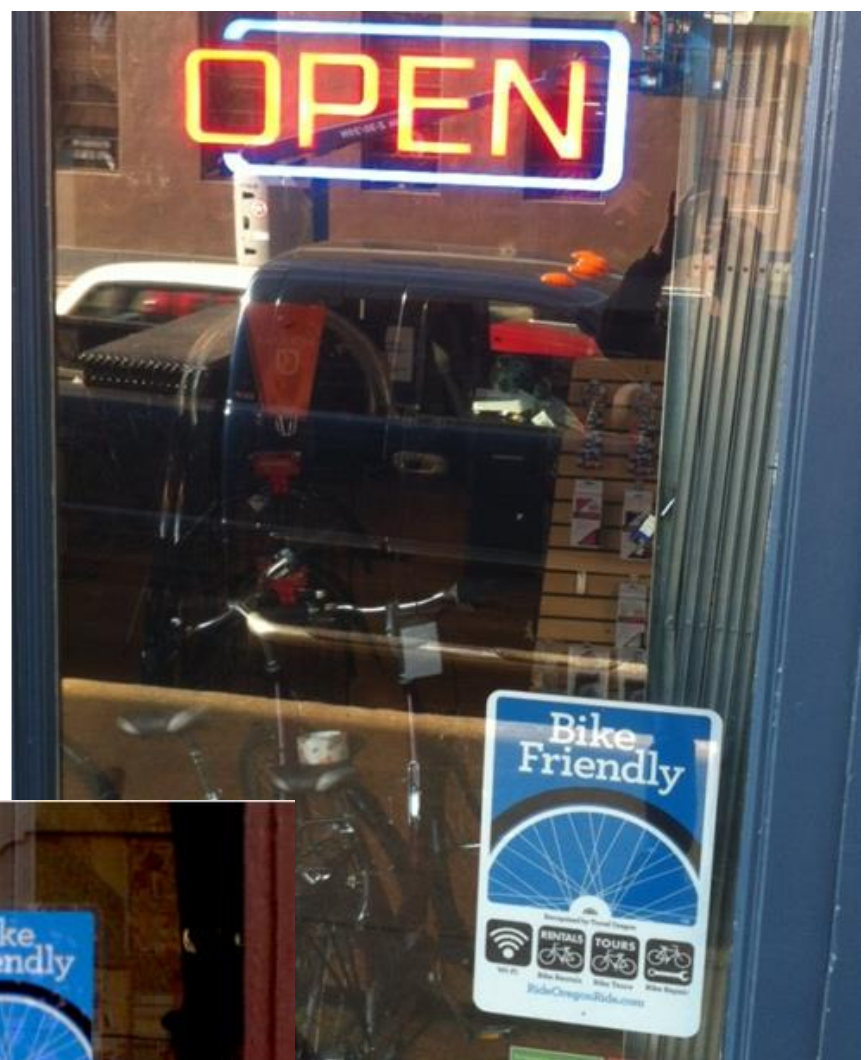


Bike Tours



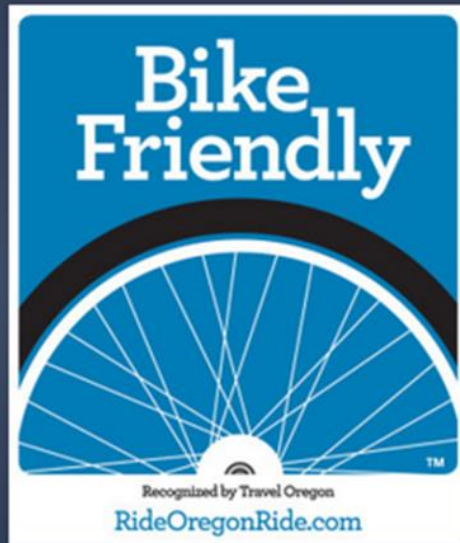
Bike Rentals





How to Get Recognized Bike Friendly

➤ Go online to
Industry.TravelOregon.com/BFB



STEPS TO GET RECOGNIZED

Become a Bike Friendly Business today and demonstrate your commitment to serving visitors who ride bikes and the specific amenities you provide. To participate in Travel Oregon's Bike Friendly Business program follow these three simple steps...

GET STARTED TODAY!