



RURAL
TOURISM STUDIO

SOUTHERN OREGON COAST

OUTDOOR RECREATION & ADVENTURE TRAVEL
NETWORKING EVENT

02.21.2017



OPENING ACTIVITY

- Move around the room
- Introduce yourself / get a business card from at least 3 people you don't know:
 - Share one thing you would like to see elevated at tomorrow's workshop?

We'll start program around 5:30 pm

INTRODUCTIONS AT YOUR TABLE

- Name
- Community
- Affiliation / Position
- What is the current tourism development related project you are working on and one thing you need to move it forward?

KEEP IT SNAPPY!!!

SOUTHERN OREGON COAST LOCAL STUDY TOURS

- South Slough Paddle – Dave Lacey
- Bandon Birding – Harv Schubotho
- South Slough Hiking – Dana?
- Marine Life Center – Trish Mace
- *YOU*





BREAK



S. COAST'S NEW OUTDOOR PRODUCT DEVELOPMENT

- Coos Flow Trails – Dave Lacey
- Coquille Water Trail Concept – Brian Kraynik
- Charters, Sport Fishing & Crabbing – Rob Gensorek
- Water-based Tours: South Coast Tours – Dave Lacey

COOS COUNTY FLOW TRAILS

Coos County Forest Trails

Flow Trails



Overview

Coos County manages 12,000 acres of timberland at the Beaver Hill/Seven Devils unit

Plan is for 30 miles of new trails in three phases

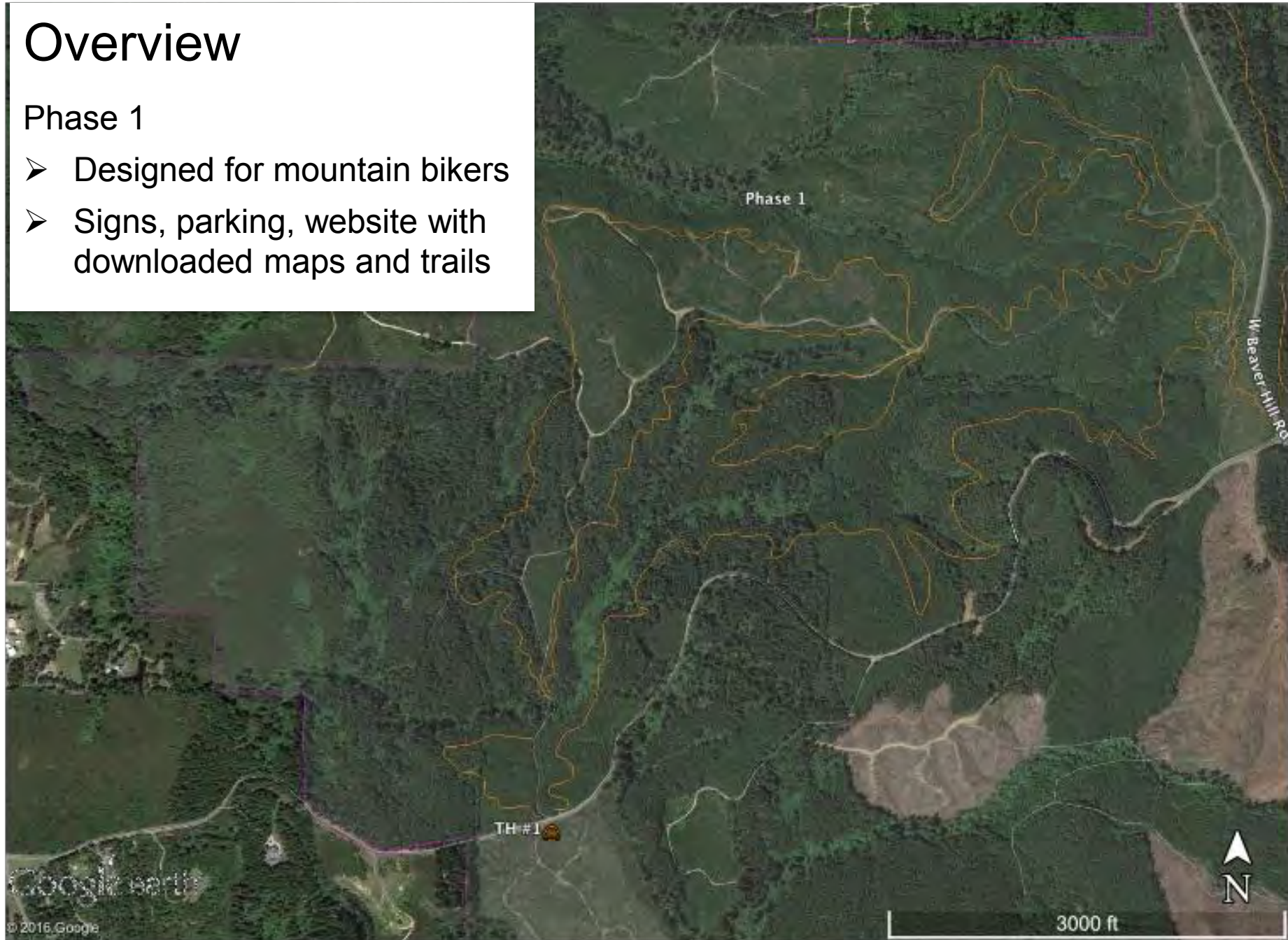
RTP request is for Phase 1 (11.58 miles)



Overview

Phase 1

- Designed for mountain bikers
- Signs, parking, website with downloaded maps and trails



Broad Community Support

Support from

- Wild Rivers Coast Alliance
- Oregon International Port of Coos Bay
- South Coast Development Council
- City of Coquille
- Bandon Chamber of Commerce
- Oregon Coast Visitors Association
- South Coast Bicycles
- Int'l Mountain Bicycling Association
- Coos Health and Wellness

Volunteer trail building and maintenance support from Wild Rivers Coast MBA



Implementation

Professional trail contractors to assure quality and sustainability



Timeline*

Phase 1

- Fall 2016 = construction planning, secure contractors
- Spring – Fall 2017 = construction, parking areas, signs, website
- Fall 2017 = project opening

* If approved



Community Benefits - Economic

Stabilize local revenues between harvest

Enhance tourism revenue

➤ \$994,000 – \$1,133,000 annually when all phases are built



Community Benefits

Health and Wellness

- Great for kids
- Hikers, walkers, and trail runners will also use trails



COQUILLE RIVER TRAIL CONCEPT

Prosper Landing



Kayak/SUP
Public launch
Historic Tours
Weddings



Coquille River Water Trail

- Showcase of our Myrtle woods, History, and Ecology.



Bandon - Myrtle Point 41 Mile Overview



Bandon-Prosper Mile 0-4

A

B



SUP Wave



C

Bird
Watching



Prosper-Parkersburg

- South Coast Tours/Prosper Landing

• Mile 4-8

Ni Les Tun
Unit



Lumber Barge



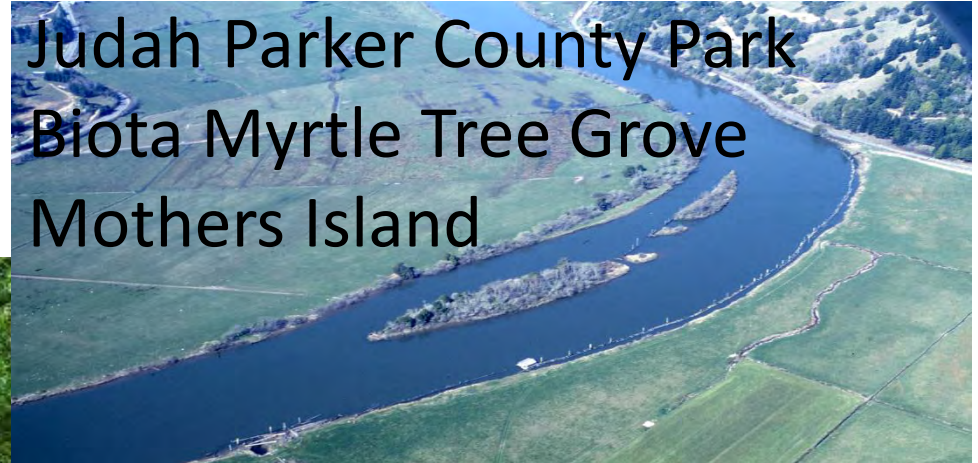
Aberdeen Mill Site

Parkersburg-Flower Hill

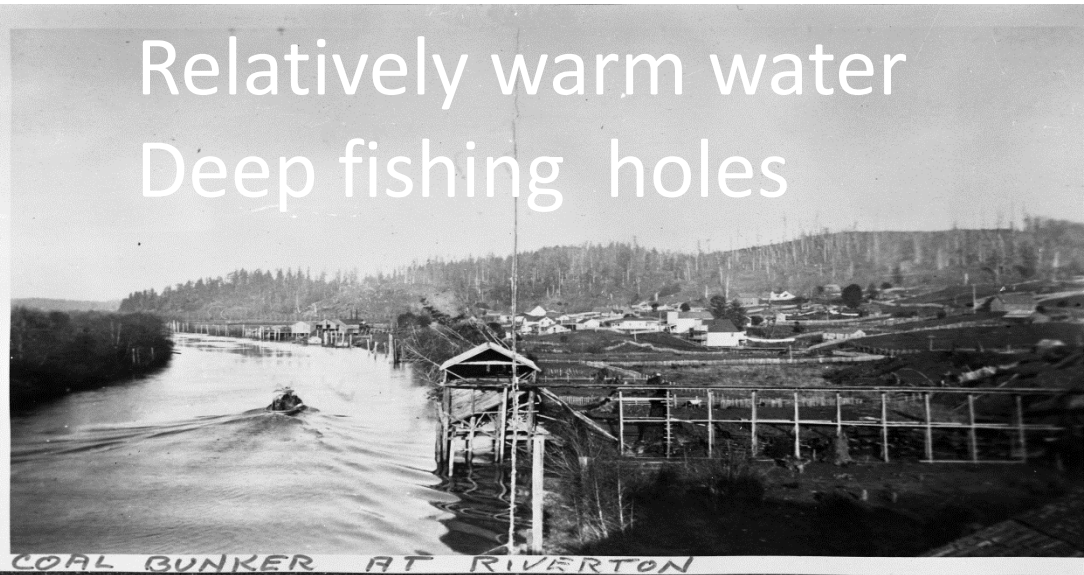
- 6-12 Primitive Camping

• Mile 8-11

sites



Flower Hill-Riverton Mile 11-15



Riverton-Cedar Point

- Small Mouth & Striper Bass Fishing



- Mile 15-23

Coquille-Johnson Mill Pond

- Mile 23-29

Sturdivant Park
Docks



Johnson Mill Pond- Arago

- Coos County Park

Mile 29-

Multi Generational Recreation



Arago-Myrtle Point

33-41

Mile



- World Class



Coos County Fair



Hoffman Myrtle Grove State Park

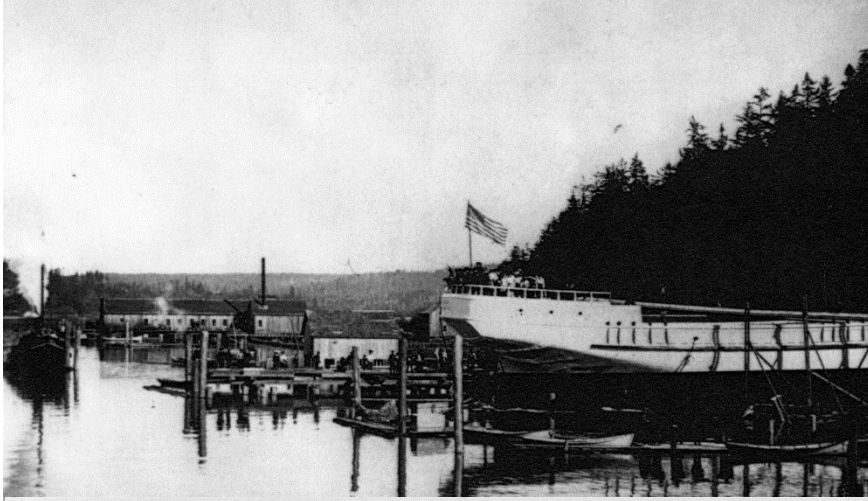
Bandon - Myrtle Point 41 Mile Overview



Potential Camping Sites



Ship Building, Canneries, Dairy Farms , Lumber Mills





Coquille River Connection:

The Coquille River creates a barrier that cannot be forded. The current route returns to Hwy 101 at Bullards Beach State Park. It then follows Riverside Dr. to Bandon and returns to the beach.

Short-term Solutions:

Enhance the ability to walk on Hwy 101, the bridge over Coquille River and on city streets.

Long-term Solutions:

Explore the feasibility of a ferry from the Bandon Lighthouse to the Bandon Harbor.



STR-DES TUG ON COQUILLE RIVER, ORE. 357

Name of Coquille River 324

- McLeod referred to the river as “Shequits.”
McLeod may have transcribed the second and third syllables of the word Mishikhwutmetunne, with Native emphasis on “shi-KHWUT” being reasonably heard by McLeod as “she-QUITS.” In that instance, the preliminary “Mi” may have been mistaken as a simple grammatical referent, and the “metunne” being well understood as referring to “the people of” the Mishikhwut river.



**FISHING CHARTERS: SHARKY'S CHARTER'S
CAPTAIN JOHN BLANCHARD**

Large Charter

- Inspected Passenger Vessel
 - 35'-50'+
 - 15-25+ passengers



Small Charter

- 6-Pack
 - 16'-32'
 - Up to 6 passengers



What do you catch?

- Bottomfish (Lingcod, Rockfish, and Halibut)
-year around



What do you catch?

Albacore Tuna

-June-September, 20+miles



What do you catch?

- King Salmon
(Barbeque, canning, and sushi)



What do you catch?

- Dungeness Crab
-Year around



What do you catch?

- River Trips in Winter (off season)



Who goes on Trips?

- All ages
- Family Groups
- Friends
- Most Clients Male 40-65 retired
- Season March-October with the peak in Aug.
- Idaho, Colorado, Montana, California, East Coast. International?

Who goes on trips?





SOUTH COAST TOURS: DAVE LACEY

South Coast Tours LLC

- Guided kayaking and SUP tours on Oregon's south coast



Fishing, SUP and wildlife viewing kayak tours on the ocean and rivers



Wildlife viewing

- Whales
- Harbor seals
- Inter-tidal critters
- Birds



Fishing

- Ling Cod
- Kelp Greenling
- Black rockfish
- Cabezon
- More...



Stand Up Paddle Boarding

- Hiking inflatable boards into Samuel Boardman State Scenic Corridor
- World class paddling
- Wild and Scenic Chetco and Rogue rivers



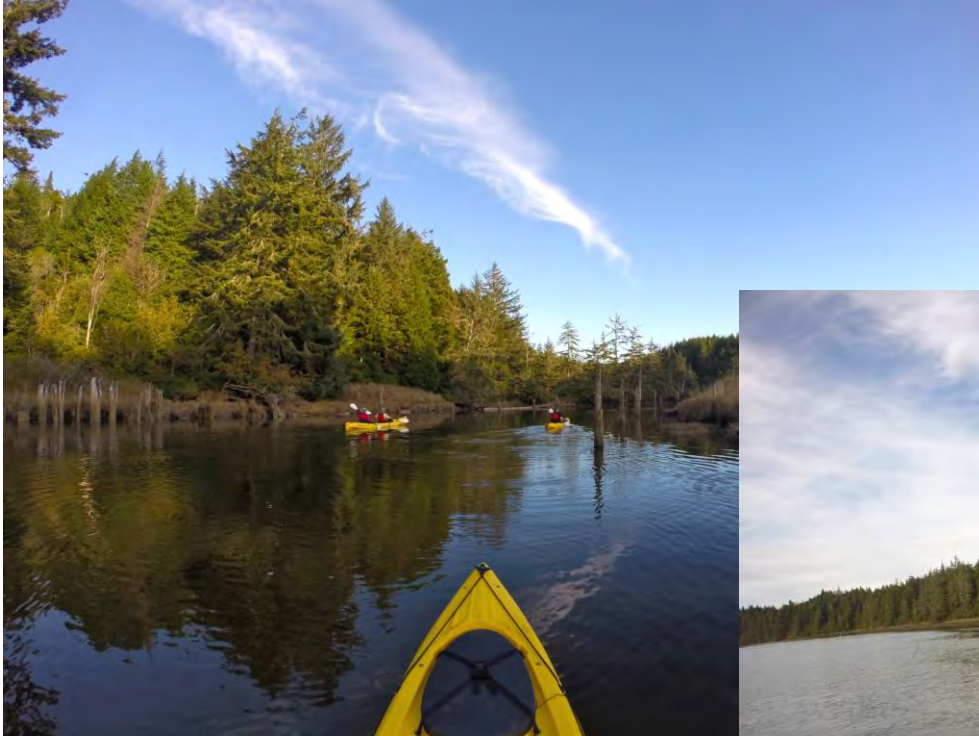
Orford Heads Wildlife Viewing tour



Brookings Ocean tour



South Slough Reserve



New Paddling Draw

Coquille River Water Trail



South Coast Tours LLC

- Guided kayaking and SUP tours on Oregon's south coast

www.southcoasttours.net
dave@southcoasttours.net
541-373-0487

