


Milepost 2016 Reconnection Projects
SUPPORTERS

Since 2009 the Historic Columbia River Highway Reconnection Projects have received letters of support from the following organizations:

- Architectural Heritage Center
- Bicycle Transportation Alliance
 - City of Astoria
 - City of Cascade Locks
 - City of Hood River
 - City of Mosier
 - City of The Dalles
 - City of Troutdale
 - Clackamas County
- Columbia Gorge Discovery Center
- Columbia River Gorge Commission
 - Columbia River Gorge National Scenic Area
 - Columbia River Gorge Visitors Association
- Confederated Tribes of the Grand Ronde
 - Confluence Project
 - Cycle Oregon
 - Cycle Wild
- Earl Blumenauer, Member of Congress
- East Multnomah County Chamber of Commerce
- East Multnomah County Transportation Coordinating Committee
 - Friends of Multnomah Falls, Board of Directors
- Friends of the Columbia River Gorge
 - Friends of the Historic Columbia River Highway
 - Friends of Vista House
- Governor's Office Economic Revitalization Team
- Historic Columbia River Highway Advisory Committee
 - Hood River County
 - Hood River Valley Residents Committee
 - Jeff Merkley, United States Senator
 - Metro
 - Multnomah County
 - Multnomah County Pedestrian and Bicycle Committee
 - Northwest Trail Alliance
- Oregon Chapter of the American Society of Landscape Architects
 - Oregon Parks and Recreation Department
 - Pedal Bike Tours
 - Peter Defazio, Member of Congress
 - Port of Cascade Locks
 - Port of Hood River
 - Port of The Dalles
- Portland Wheelman Touring Club
- Portland Women's Forum
 - Ron Wyden, United States Senator
 - Sierra Club Columbia Chapter
 - Travel Oregon
 - Travel Portland
 - Wasco County

PROGRESS REPORT 2013



 In the cover:
The new McCord Creek Bridge on the Historic Columbia River Highway State Trail

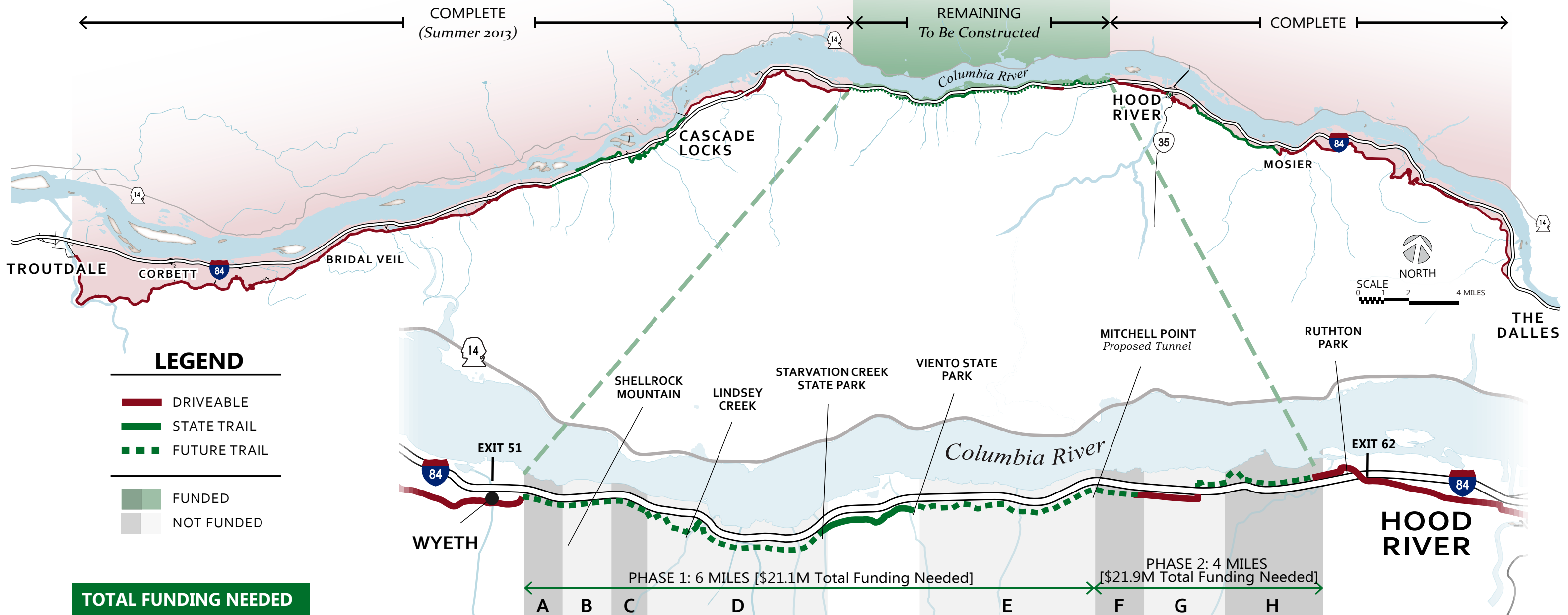
Mile Post 2016
For more information on this project visit...
<http://www.oregon.gov/ODOT/HWY/HCRH/>



Mile Post 2016
World class adventure...from Portland to The Dalles
Reconnecting the Historic Highway as a trail



RECONNECTION SEGMENTS AND FUNDING STATUS MAY 2013



LEGEND

- DRIVEABLE
- STATE TRAIL
- - - FUTURE TRAIL
- FUNDED
- NOT FUNDED

TOTAL FUNDING NEEDED

TRAIL CONSTRUCTION **\$43.0M**
 RECREATIONAL UPGRADES **\$ 4.5M**
 TOTAL NEEDED **\$47.5M**

	PHASE 1: 6 MILES [\$21.1M Total Funding Needed]						PHASE 2: 4 MILES [\$21.9M Total Funding Needed]		
	A	B	C	D	E	F	G	H	
ENVIRONMENTAL									
ENGINEERING									
CONSTRUCTION	\$2.1M	\$4.5M	\$5.0M	\$0	\$9.5M	\$11.1M	\$2.8M	\$4.7M	
FUNDS NEEDED	\$2.1M	\$4.5M	\$5.0M	\$0	\$9.5M	\$13.1M	\$3.3M	\$5.5M	

SCALE
0 1 2 4 MILES

ENLARGEMENT SCALE
0 1 2 MILES