



USDA – Rural Development Opportunities and Financing to Support Tourism and Recreation

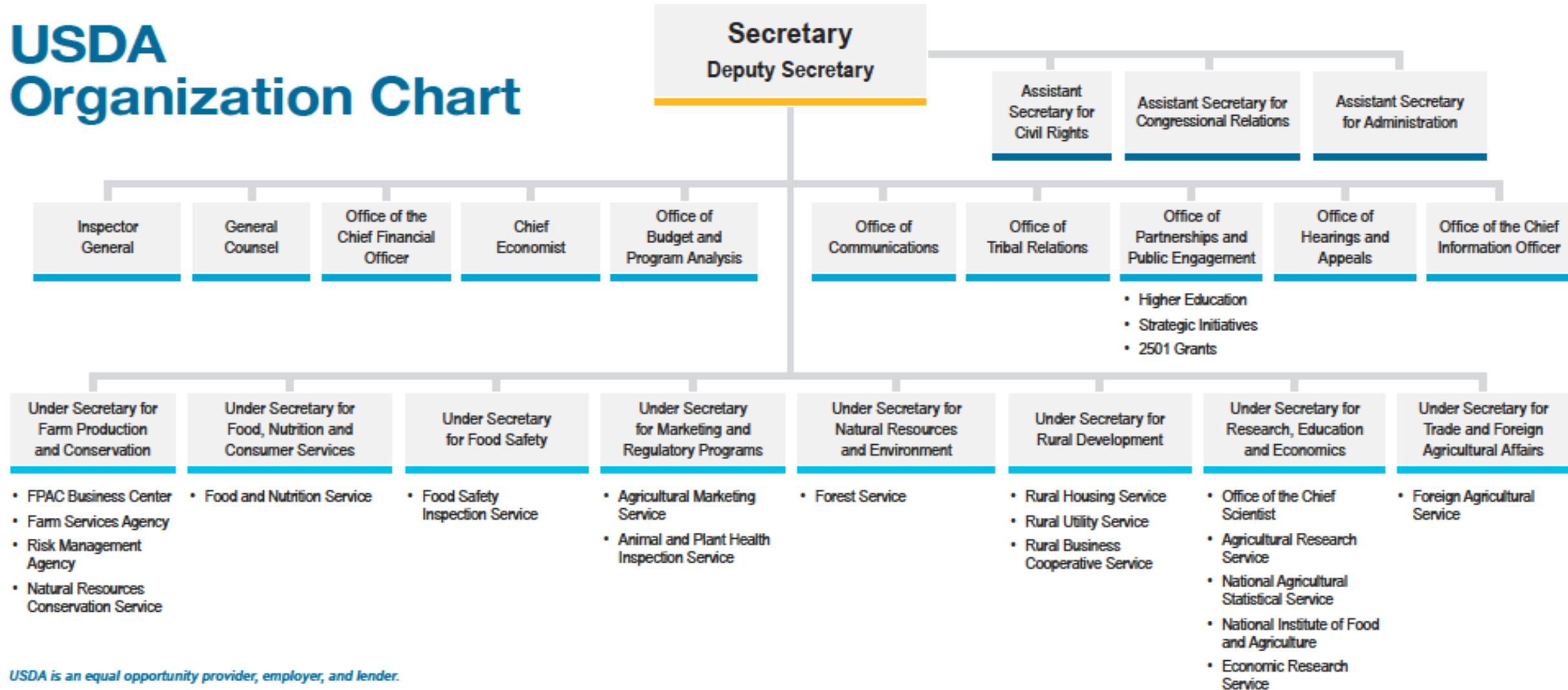
September 30th , 2020

One USDA, Eight Mission Areas





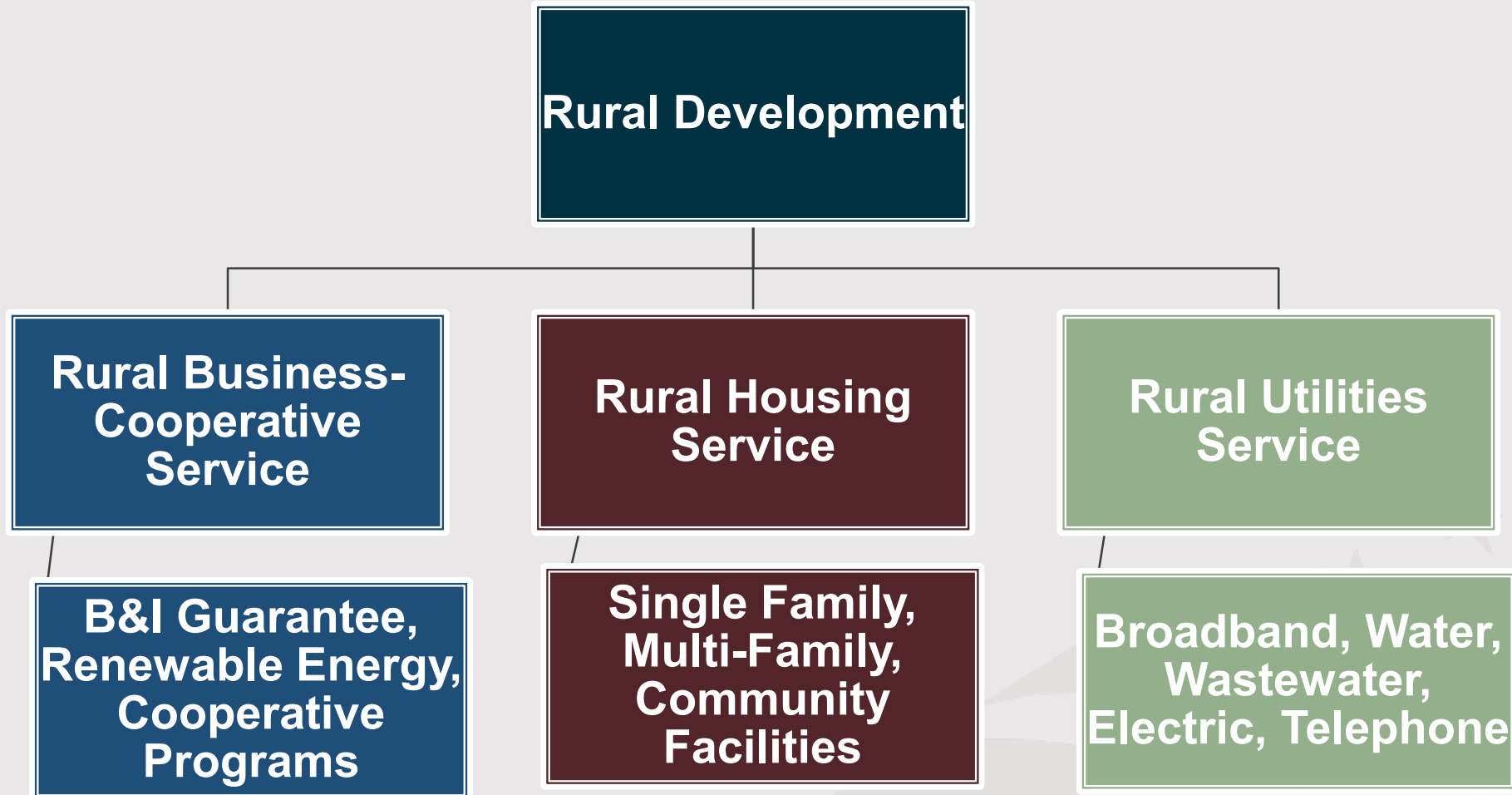
USDA Organization Chart



USDA is an equal opportunity provider, employer, and lender.

UPDATED 08/31/20 This organization chart displays the names of USDA offices, agencies, and mission areas. Each office, agency, and mission area is placed within a cell connected by lines to show the structure and hierarchy (Under Secretary, Deputy Secretary, or Secretary) for which they fall under. An HTML version that lists [USDA Agencies and Offices](#) and [USDA Mission Areas](#) is also available on usda.gov. The [Secretary's Memorandum 1076-031](#) was signed August 12, 2019 effectuating a change to Rural Development.

Rural Development

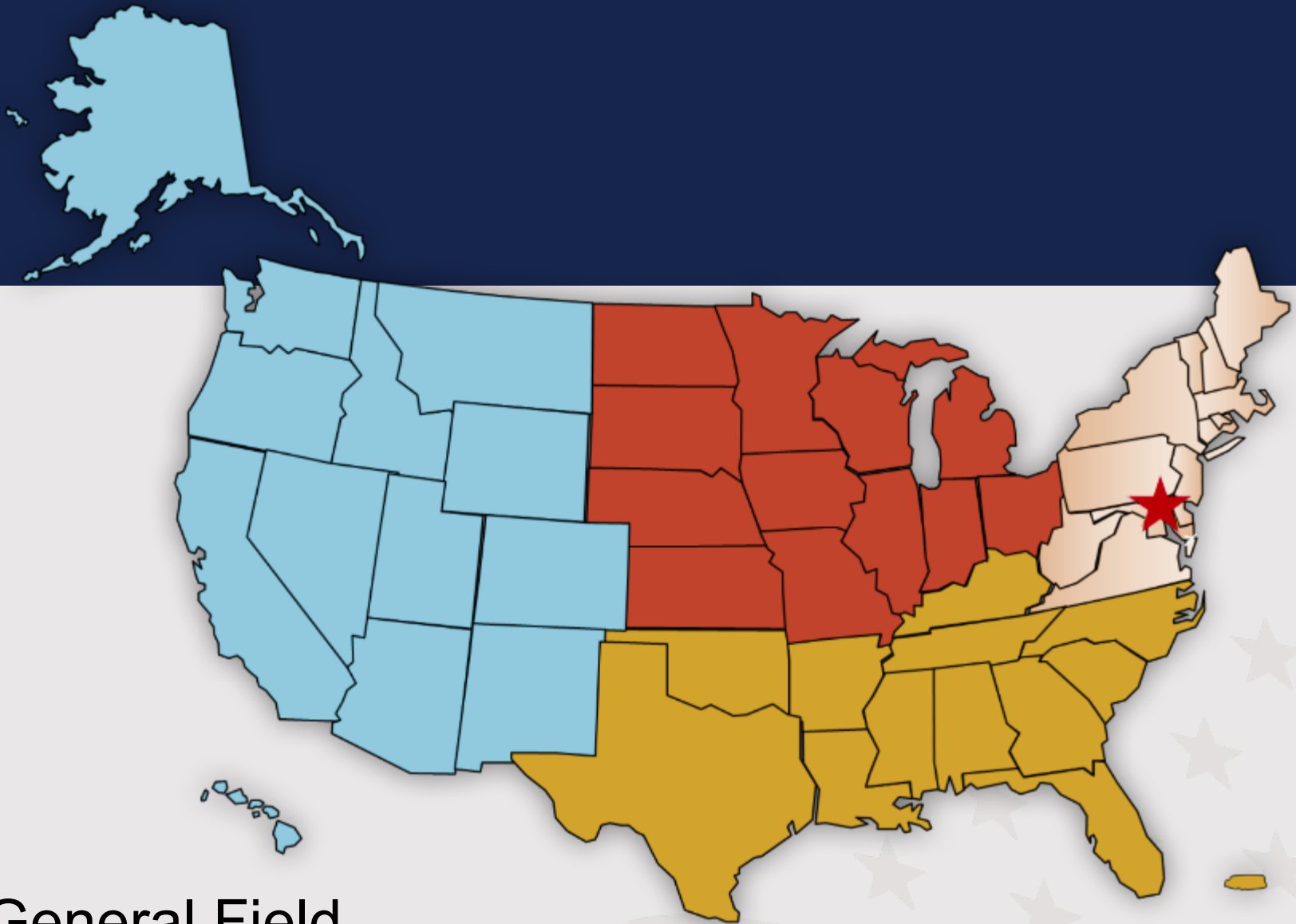


Rural Development

4 Regions
47 State Offices
400 Area Offices
1 National Office in DC

State Staff

- State Director—
Schedule C
- Program Directors
- State Loan Staff
- Area Directors
- Program Staff
- General Field
Representatives
- Innovation Center staff



Oregon RD Office Locations

LaGrande
1902 Adams Ave, Suite 1
(541) 624-3087

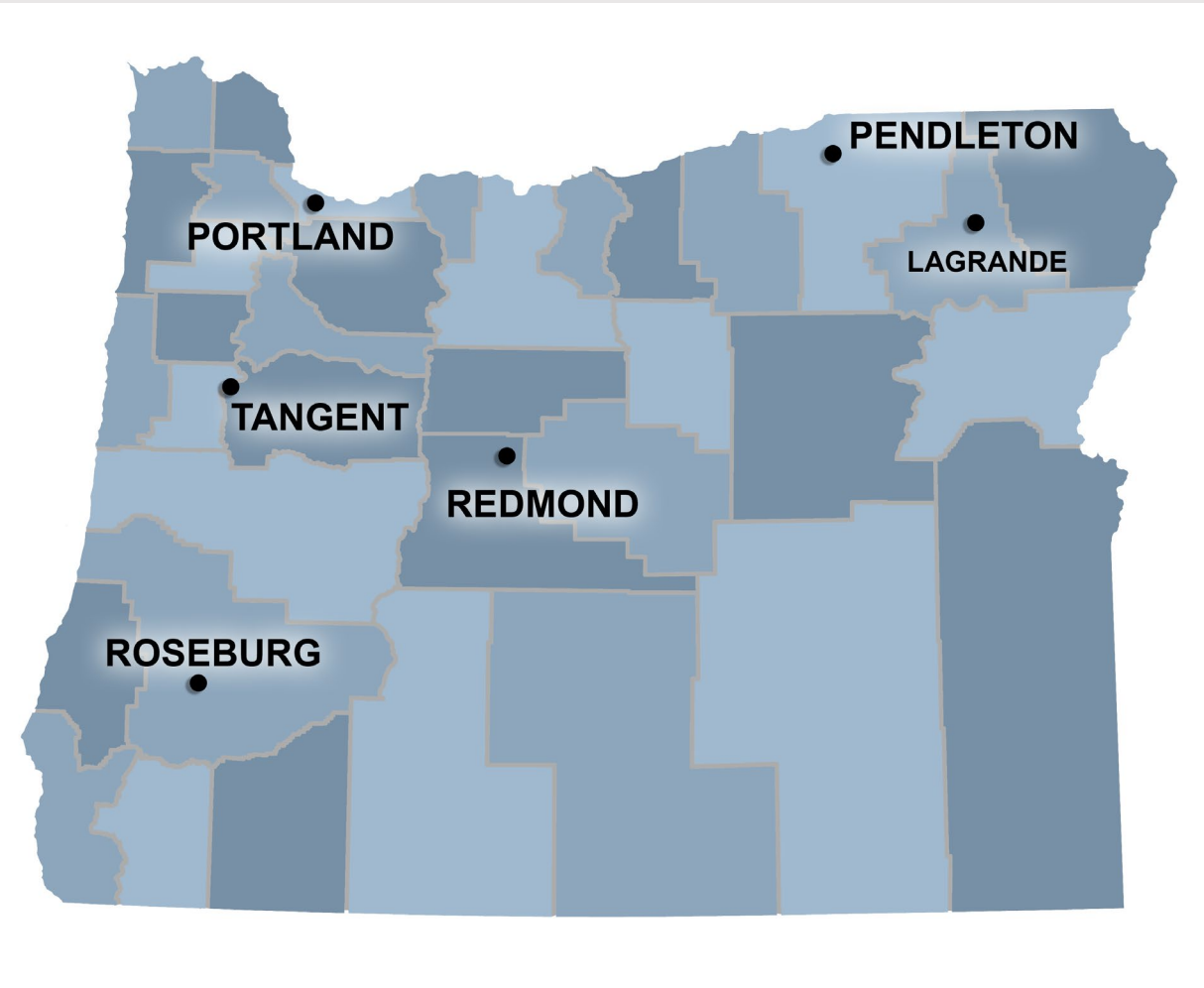
Portland (State Office)
1220 SW 3rd., Suite 1801
(866) 923-5626

Pendleton
1 SW Nye Avenue, Suite 120
(541) 278-8049 ext. 4

Redmond Office
625 SE Salmon Ave
(541) 923-4358 ext. 4

Roseburg Office
2593 NW Kline Street
(541) 673-6071 ext. 4

Tangent Office
31978 North Lake Creek Drive
(541) 967-5925 ext. 4



Key Programs

[Business & Industry Loan Guarantees in Oregon](#)
[Single Family Housing Direct Home Loans in Oregon](#)
[Single Family Housing Repair Loans & Grants in Oregon](#)

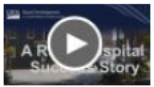
[Water & Waste Disposal Loan & Grant Program in Oregon](#)
[Community Facilities Direct Loan & Grant Program in Oregon](#)
[Rural Energy for America Program Renewable Energy Systems & Energy Efficiency Improvement Guaranteed Loans & Grants in Oregon](#)



Oregon Highlights



[VIDEO: A Value Added Success Story](#)



[VIDEO: A Rural Hospital Success Story](#)



[Rural Hotel Provides Lodging for Essential Workers, Continued Employee for Staff Amid Pandemic](#)



[Homeownership Gives Rural Family a Lifetime of Security, Safety Amid Pandemic](#)



[Oregon Rural Developments Newsletter for Summer 2020](#)



Oregon News

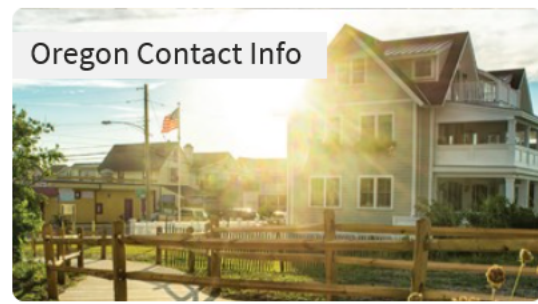
[09-28-2020 USDA Expands Access to Broadband Infrastructure Financing for Rural Businesses and Residents under Select Rural Development Programs](#)

[09-24-2020 USDA is Seeking Applications for Grants to Increase Access to Broadband in Unserved Rural Areas](#)

[09-24-2020 USDA is Seeking Loan and Grant Applications to Strengthen Economic Conditions in Rural Areas](#)

[09-23-2020 Join USDA Rural Development for a Virtual Career Expo on Sept. 29 & 30](#)

[09-22-2020 USDA is Seeking Applications for Funding to Support Commercial Biorefineries](#)



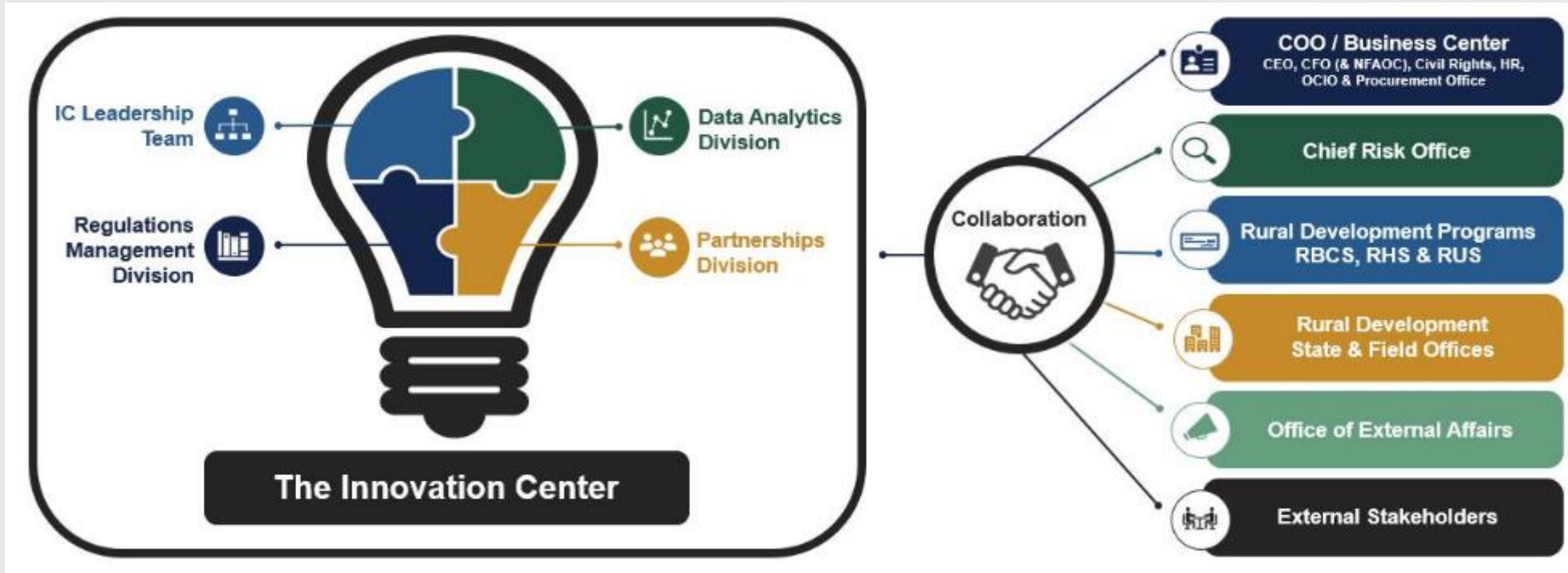
Oregon Contact Info

Toll Free: (866) 923-5626
Phone: (503) 414-3300
FCC Relay Service: 711

State Director's Office: (503) 414-3306
Business Programs: (541) 278-8049 ext. 129
Community Programs: (503) 414-3354
Multi-family Housing: (503) 414-3350
Single Family Housing: (503) 414-3339
Telecommunications: (503) 414-3369
Electric: (509) 309-6923
Public Affairs: (503) 414-3304

[View all Oregon Contacts](#)

Innovation Center



Working together to develop fresh, creative solutions – Innovate!

- Centralization of key **Reg Management** functions to better support RD programs
- Building and leveraging **Partnerships** to increase impact
- Using **Data Analytics** to enhance evidence-based decision making

Rural Development Funding

\$232 Billion portfolio

Fiscal Year 2019 obligations-\$28 billion

\$25.9 billion loans

\$2.3 billion grants

Fiscal year 2019 obligations by program

SFH \$15.7 billion

MFH \$1.7 billion

Business Programs \$2 billion

Community Facilities \$922 million

Waste and Environmental \$1.7 billion

Electric \$5.7 billion

Telecommunications \$278 million

Business Development Programs

Business & Industry Loan Guarantees

- Convert, enlarge, repair, modernize, or develop business
- Purchase and develop land, easements, rights-of-way, buildings, or facilities
- Purchase equipment, machinery, supplies, or inventory
- Working Capital



Rural Infrastructure Programs—Rural Business-Cooperative Service

Energy Programs

Loans and grants for

- Renewable energy development,
- Energy efficiency improvements and renewable energy systems,
- Payments for advanced biofuels production.



Rural Infrastructure Programs—Rural Utilities Service



Electric Programs

Loans and grants to rural electric utilities to build, maintain, upgrade and modernize electric power systems.

Rural Infrastructure Programs—Rural Utilities Service

Telecommunications Programs

Loans and grants to build, maintain, upgrade and modernize high-speed Internet broadband and telephone service in rural areas.

Rural Infrastructure Programs—Rural Utilities Service

Water and Environmental Programs

Loans and grants for:

- Safe drinking water,
- Sanitary waste disposal systems.



Rural Infrastructure Programs—Housing Service



Community Facilities Programs

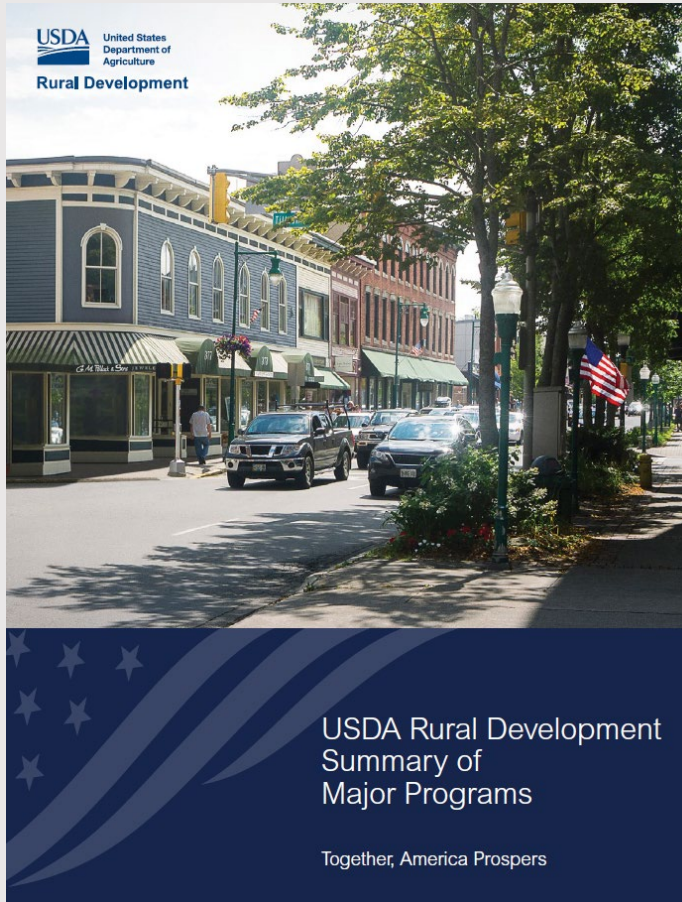
Loans and grants for essential community infrastructure.

Rural Infrastructure Programs—Housing Service

- Single Family Direct and Guaranteed
- Multi-Family Direct and Guaranteed
- Low-income repair loans and grants
- Housing Preservation grants



Full List of Programs



- <https://www.rd.usda.gov/page/all-programs>

Resource Guide

Recreation Economy at USDA Economic Development Resources for Rural Communities

https://www.rd.usda.gov/sites/default/files/RD_Recreation_Economy_USDA.pdf

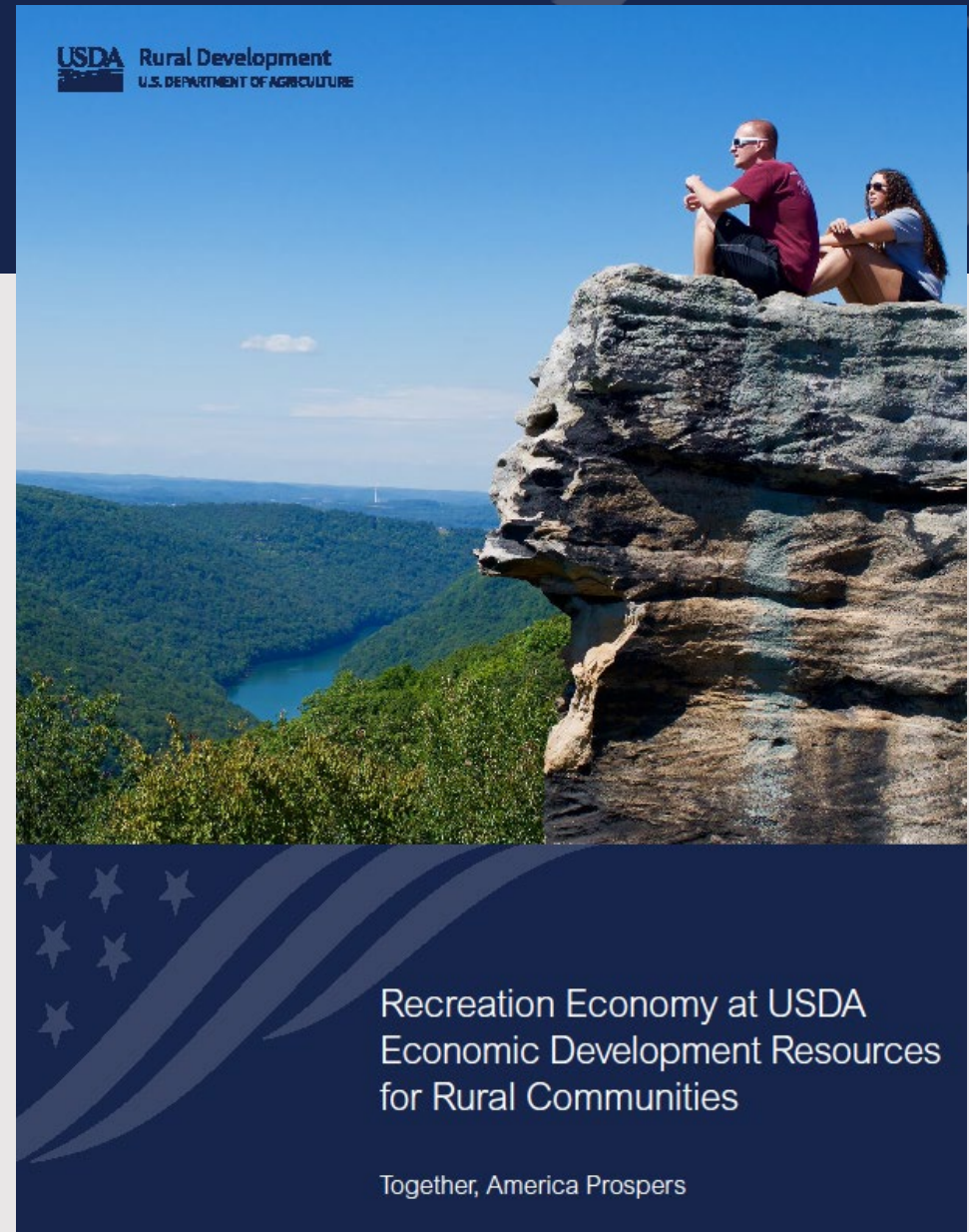


Table of Contents

Recreation Economy	4
Factors to Consider in Building the Recreation Economy	5
U.S. Forest Service	6
USDA Rural Development	7
National Institute for Food and Agriculture Land Grant Universities	8
How USDA Agencies Partner to Provide Recreation Economy Assistance	9
Highlighted Recreation Economy Resources at USDA	10
Additional Resources	13
Success Stories	14

Partnering to Provide Assistance



How USDA Agencies Partner to Provide Recreation Economy Assistance

In order to sustainably manage the National Forest System, while bringing economic opportunities to forest-adjacent communities, FS, RD and NIFA/land grant universities have many opportunities to partner. Here are some examples:

Planning/Partnership

In 2012, FS updated its land management planning requirements with a new planning rule. Because of the importance of sustainably managing the National Forest System with the help of the public and other stakeholders, this rule emphasizes FS's responsibility to engage with the public and to work more closely with state, local and tribal governments when national forest managers amend or revise their land management plans. Economic impact analysis and planning is an important component of the planning process. Since RD, NIFA and land-grant universities have the expertise and vested interest in economic development, the agencies can coordinate and collaborate at various stages of planning and implementation processes. For example, planning efforts that at the outset involve land managers, economic development authorities, RD, NIFA, land-grant universities and Cooperative Extension may also bring technical assistance to the table to support coordination and implementation.

Financing for Infrastructure and Business Development

RD has a loan portfolio of about \$225 billion that is financing infrastructure and business development projects. RD has staff in every state to provide grants, loans and loan guarantees that help rural communities become stronger and more vibrant. RD is an agency that continues to create job opportunities in rural America through investments in rural businesses and cooperatives. At the same time, RD provides loans, grants and loan guarantees to support reliable and necessary services such as water, energy, housing, broadband, schools and hospitals. Collectively, these investments support families that call rural areas home. RD is focused on leveraging the strengths of rural areas, building new markets to increase regional competitiveness and continuing to expand investment opportunities that create prosperous, sustainable communities. When rural America thrives, all of America thrives.

Additional Resources

Additional Resources

- U.S. Forest Service, the Northern Border Regional Commission and the [Environmental Protection Agency's Recreation Economy for Rural Economies](#) guide. Provides planning assistance to communities interested in boosting their economies by capitalizing on outdoor recreation opportunities.
- [e-Connectivity @ USDA Broadband Resources for Rural America](#) -This toolkit presents USDA resources that support e-Connectivity and aims to help customers navigate the agencies within our Department to find the opportunity that best fulfills their need. From grants and loans, to partnerships and in-person consultations, USDA can support a wide variety of project types for a diversity of customers.
- The U.S. Forest Service [Tribal Partnership Resource Guide](#).
- [Collaborating for Prosperity with American Indians and Alaska Natives](#) is a guide by USDA Rural Development's Innovation Center featuring numerous programs available to tribes, tribal families, children, and communities.
- Listing of [Rural Development's Summary of Major Programs](#)
- A regional [community planning curriculum](#), developed in partnership with Rural Development and the Southern Rural Development Center at Mississippi State University, is also available.
- [Alaska Community Tourism Handbook](#)
- [U.S. Forest Service Forest Legacy Program](#)
- Environmental Protection Agency: Environmental Projects for Rural Economies Grant is a planning assistance program to help communities develop strategies and an action plan to revitalize their Main Streets through outdoor recreation - <https://www.epa.gov/smartgrowth/recreation-economy-rural-communities>
- Environmental Protection Agency: Local Foods, Local Places helps cities and towns across the country protect the environment and human health by engaging with local partners to reinvest in existing neighborhoods as they develop local food systems. In 2019, the program is sponsored by the U.S. Department of Agriculture (USDA), EPA, and the Northern Border Regional Commission.: [Local Foods Local Places Program](#)
- [Headwaters Economics Profile System](#)
- Federal Interagency Council on Outdoor Recreation: [Jobs and Income Report](#)
- [Food and Nutrition Service Grants Information](#)



Infrastructure Development to Support the Recreation Economy

Success Stories

Local Partnerships Driving Recreation Success—Marquette Michigan

Marquette, Michigan, in Marquette County is on the southern shores of Lake Superior. Historically known for mining and shipping iron ore, today Marquette is flourishing as one of Michigan's premier recreation-based economies. Marquette was listed as one of CBS's 10 best places to retire in 2012, one of the 10 top mountain bike towns in the U.S. according to the Active Times in 2013, and the 8th best small city (out of 1,300) in America according to Nerdwallet in 2015. With 10 miles of paved trail, Marquette received a silver Bicycle Friendly Community Award from the League of American Bicyclists in 2014. Besides its natural beauty, water-front location and four distinct seasons, which maximize year-round appeal, the area has benefited from a core group of knowledgeable, creative, dedicated and passionate advocates who executed a clear vision for their area. The formation of a recreation authority to manage the Iron Ore Heritage Trail, and ongoing collaboration with Travel Marquette, has been critical. Visually distinctive signage along the trail describes the mining heritage of the area and adds unique character to the user experience, contributing to a sense of place among residents and visitors alike. Building relationships with local people and businesses, and actively seeking and showcasing [ecotourism destinations](#), have also contributed to Marquette's continuing success.

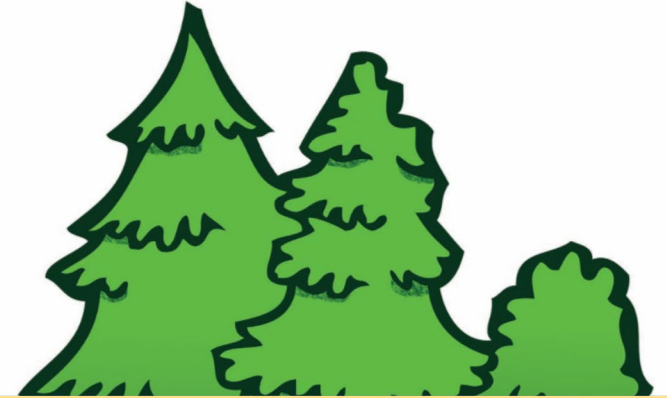
Diversifying Economy Through Tourism—Town of Thomas, West Virginia

The remote, rural town of [Thomas](#) in West Virginia, a coal-dependent economy since the 1880s, is using tourism to diversify its economy. New Historic Thomas was formed as a nonprofit community group to revitalize the town by preserving its unique history, cultural heritage and resources. The nonprofit began to focus on developing cultural amenities that would complement outdoor recreation opportunities. The cornerstone of the recreational trail opportunities adjacent to Thomas is the [Blackwater Canyon Trail](#). A partnership with the U.S. Forest Service's Cheat-Potomac District was established to further development the recreational use of the former rail grade along the Blackwater River. FS is continuing to work with private owners to conduct trail maintenance and promote recreational assets which benefit Thomas and can attract considerable numbers of recreational trail users.

Success Stories

Partners

U.S. Forest Service



National Institute for Food and Agriculture (NIFA) Land Grant Universities

USDA Rural Development



Resource Guide

How USDA Agencies Partner to Provide Recreation Economy Assistance

In order to sustainably manage the National Forest System, while bringing economic opportunities to forest-adjacent communities, FS, RD and NIFA/land-grant universities have many opportunities to partner. Here are some examples:

- **Planning/Partnership**
- **Financing for Infrastructure and Business Development**

Initiatives-Opportunities and Challenges

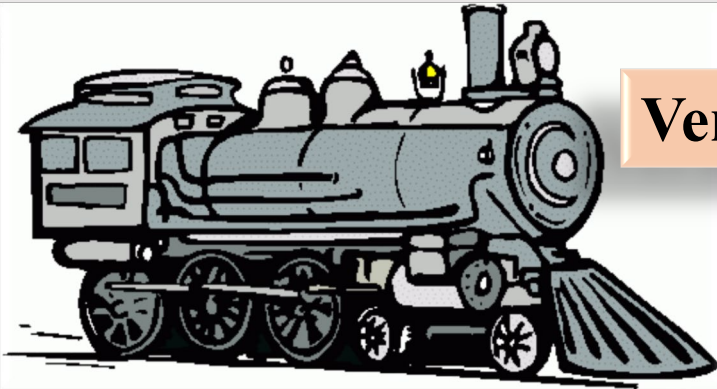
- In many rural communities their best asset is the mountain, river, or bike path
- Communities know they need to adapt in order thrive
- Economic data supports building the recreation economy will create jobs
- If the project was easy, it would already be built-requires partnerships and capital stacking
- Building consensus is often challenging-many competing groups
- A sound business plan is essential to attracting capital
- Celebrate small victories to create support for larger projects

How does RD Programs help Rural Recreation Economies?

RECREATION ECONOMY=ECONOMIC AND COMMUNITY DEVELOPMENT



Success Stories



Vermont Community Facilities \$175,512 Grant

North Carolina Community Facilities Loan \$5,919,000



Success Stories

Washington REAP \$1,750,000 loan



Nevada Guaranteed Business Program loan \$2,400.000

Success Stories

Vermont Community Facilities \$164,500 Grant

Michigan Community Facilities Loan \$1,400,000

Ohio Rural Business Development Grant \$79,000



Outside the Box?

Rural housing on Federal lands—Jackson, WY?

Business funding for concessionaire's?

Community “owned”/operated visitor and/or camping facilities?

Coordinated and integrated community/Federal land manager planning?
EDA CEDS and USFS National Forest System Land Management Planning

Broadband deployment?

Other?

Let's Connect!

Tim O'Connell

tim.oconnell@usda.gov

202-768-0587



RD.Innovation.Data@usda.gov

In accordance with Federal civil rights law and U.S. Department of Agriculture (USDA) civil rights regulations and policies, the USDA, its Agencies, offices, and employees, and institutions participating in or administering USDA programs are prohibited from discriminating based on race, color, national origin, religion, sex, gender identity (including gender expression), sexual orientation, disability, age, marital status, family/parental status, income derived from a public assistance program, political beliefs, or reprisal or retaliation for prior civil rights activity, in any program or activity conducted or funded by USDA (not all bases apply to all programs). Remedies and complaint filing deadlines vary by program or incident.

Persons with disabilities who require alternative means of communication for program information (e.g., Braille, large print, audiotope, American Sign Language, etc.) should contact the responsible Agency or USDA's TARGET Center at (202) 720-2600 (voice and TTY) or contact USDA through the Federal Relay Service at (800) 877-8339. Additionally, program information may be made available in languages other than English.

To file a complaint of discrimination, complete the USDA Program Discrimination Complaint Form, AD-3027, found online at http://www.ascr.usda.gov/complaint_filing_cust.html and at any USDA office or write a letter addressed to USDA and provide in the letter all of the information requested in the form. To request a copy of the complaint form, call (866) 632-9992. Submit your completed form or letter to USDA by:

- 1) Mail: U.S. Department of Agriculture
Office of the Assistant Secretary for Civil Rights
1400 Independence Avenue, SW
Washington, D.C. 20250-9410;
- 2) Fax: (202) 690-7442; or
- 3) Email: program.intake@usda.gov.

USDA is an equal opportunity provider, employer, and lender.