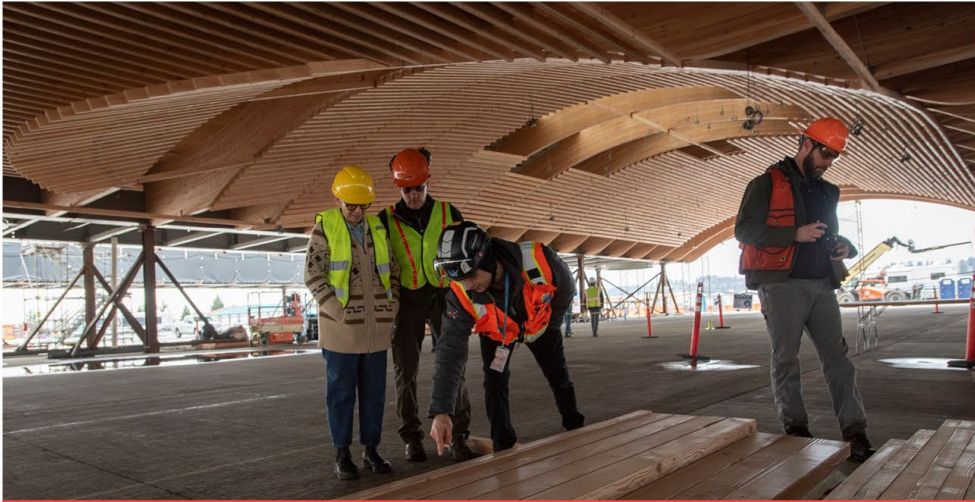




More flights to Europe





INSTALL NEW ROOF OVER PDX



NEW MAIN TERMINAL OPENS



BUILD OUT INTERIOR SPACES



PROJECT COMPLETE

The image shows the interior of a large-scale construction project, likely an airport terminal. The most prominent feature is the intricate wooden roof structure, consisting of numerous beams and trusses that create a complex, vaulted ceiling. The wood is a light, natural color. Below the roof, the floor is a concrete construction site. Several blue scissor lifts are positioned on the floor, and various construction materials and equipment are scattered around. In the background, there are large, curved concrete walls that appear to be part of the terminal's structure. The overall atmosphere is one of active construction and modern architectural design.

What's up at PDX?

Keeping the heart and soul



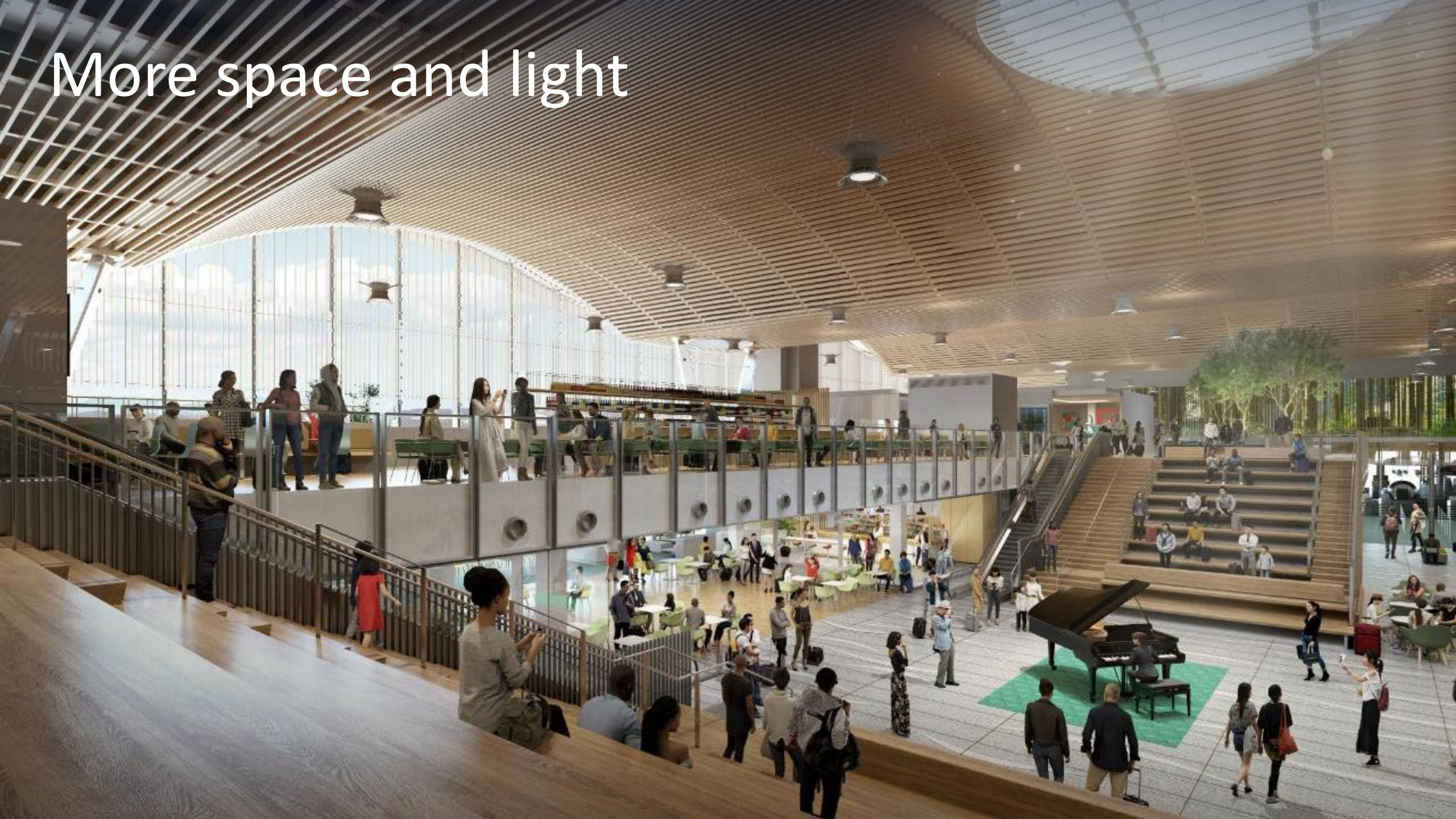
More flow



More PNW vibes



More space and light



Concourse connector returns



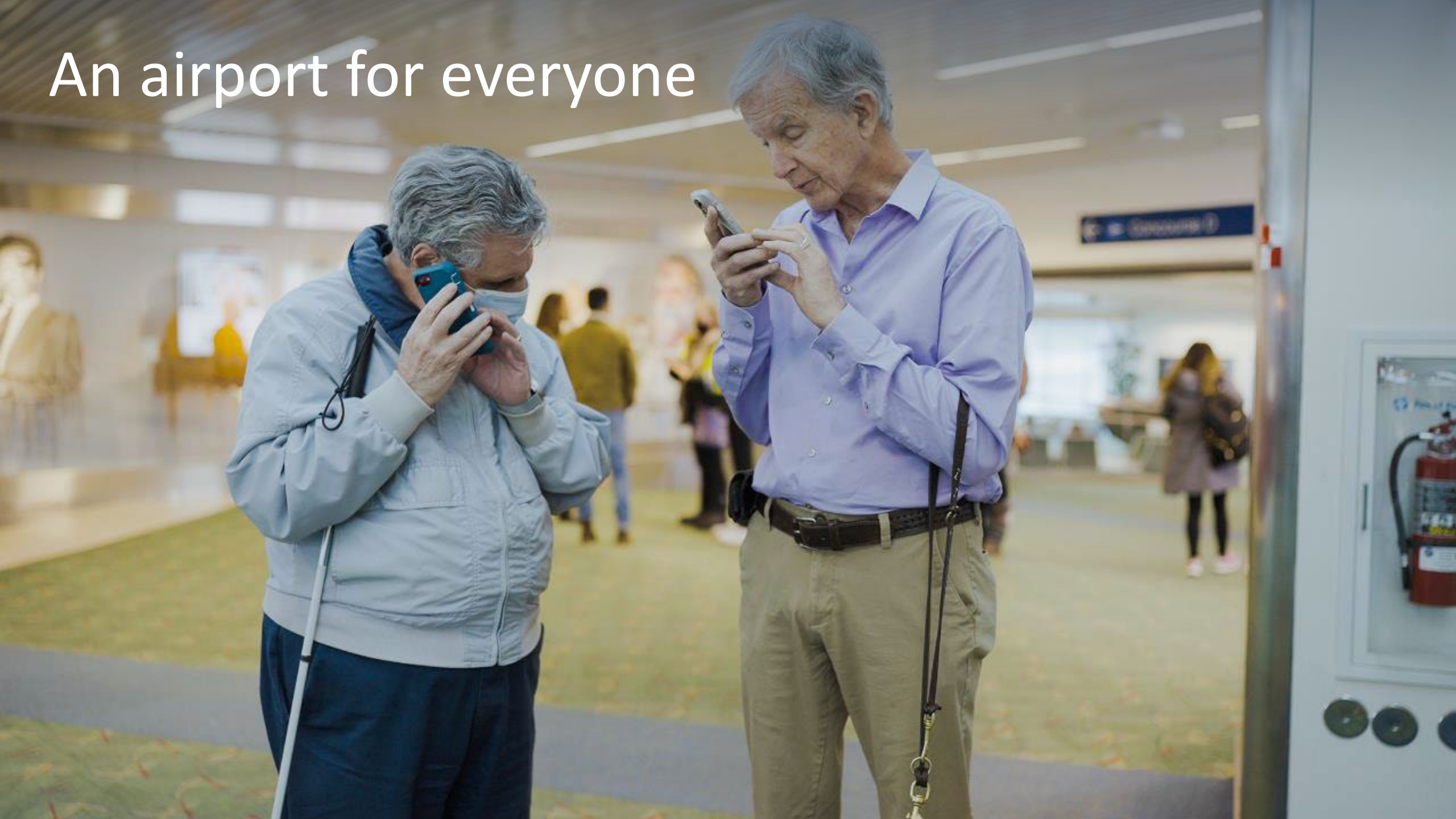
More local shops



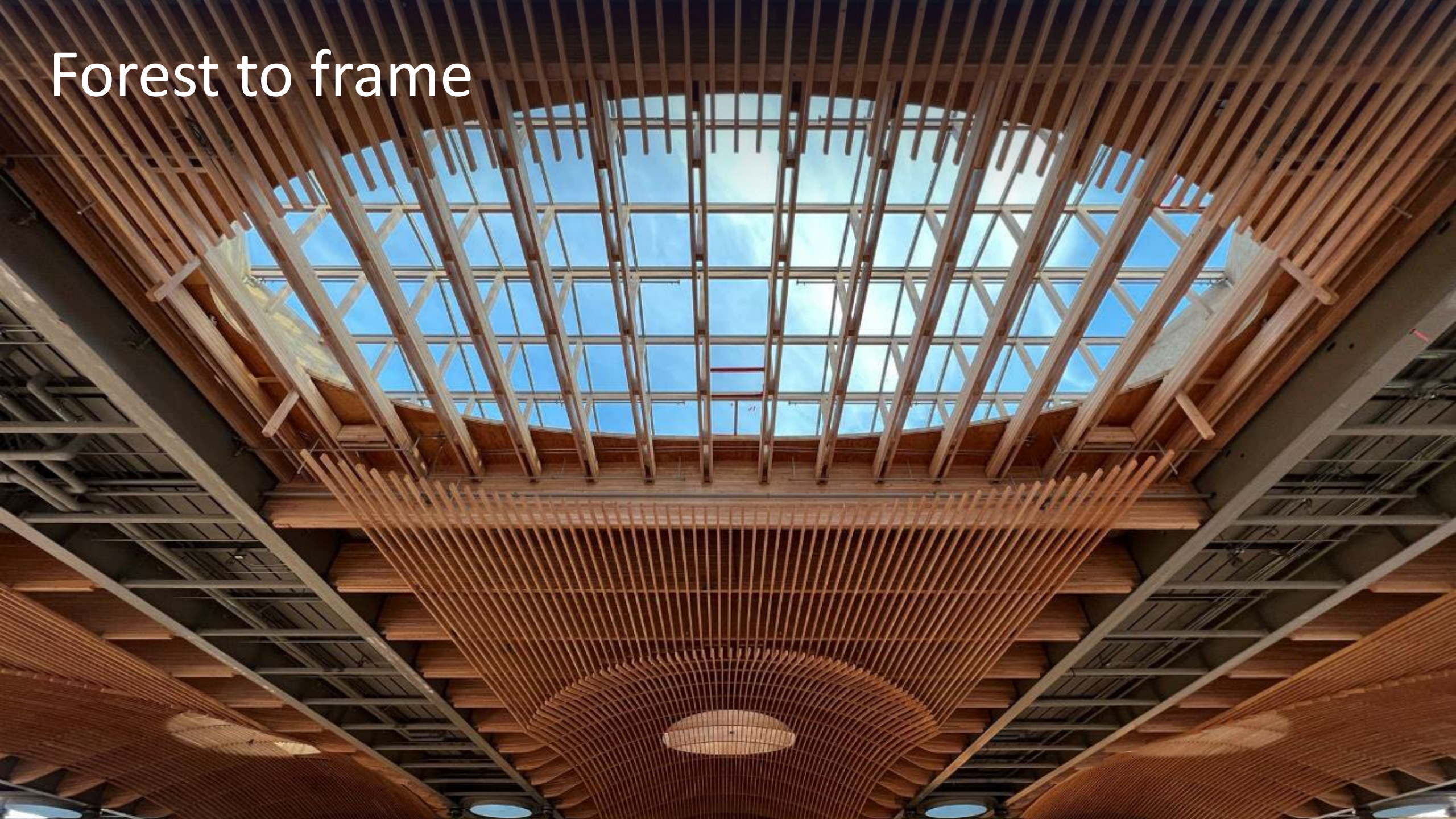
The carpet returns



An airport for everyone



Forest to frame





PORTLAND AIRPORT TERMINAL

